

RIGID

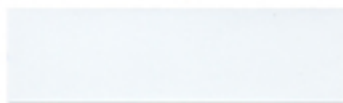
BUILDING SYSTEMS

With ENERGY STAR®
Compliant
Fluoropon® SR
Coatings by

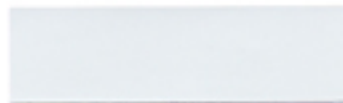
Valspar

Cool Colors Palette

SOLID FLUROPON® PVDF COLORS - KYNAR 500®



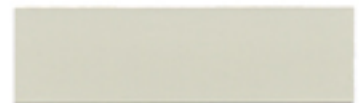
REGAL WHITE SR:0.70 E:0.86



ASCOT WHITE SR:0.69 E:0.85



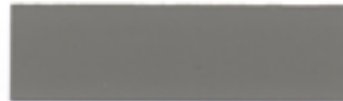
BONE WHITE SR:0.69 E:0.84



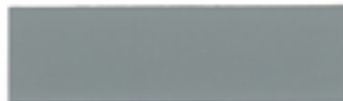
SANDSTONE SR:0.61 E:0.85



DOVE GRAY SR:0.47 E:0.86



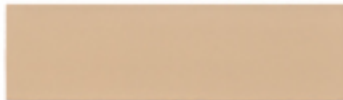
ZINC GRAY SR:0.35 E:0.86



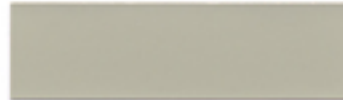
OLD TOWN GRAY SR:0.41 E:0.85



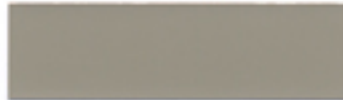
SURREY BEIGE SR:0.48 E:0.86



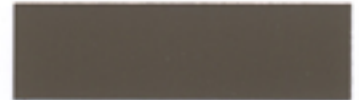
RAWHIDE SR:0.55 E:0.85



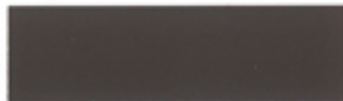
PARCHMENT SR:0.53 E:0.85



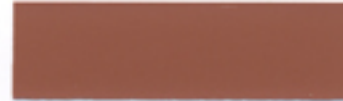
ANTIQUÉ BRONZE SR:0.43 E:0.86



SPARTAN BRONZE SR:0.31 E:0.85



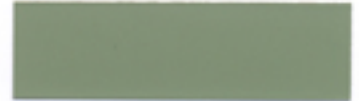
DARK BRONZE SR:0.27 E:0.85



REDWOOD SR:0.38 E:0.86



COLONIAL RED SR:0.32 E:0.86



PATINA GREEN SR:0.41 E:0.84



EVERGREEN SR:0.26 E:0.85



SLATE BLUE SR:0.28 E:0.85



REGAL BLUE SR:0.26 E:0.85

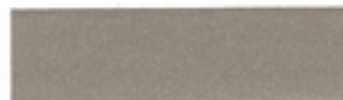


TAHOE BLUE SR:0.26 E:0.85

MICA FLUROPON CLASSIC® II PVDF COLORS



SILVERSMITH SR:0.52 E:0.81



CHAMPAGNE BRONZE SR:0.43 E:0.81

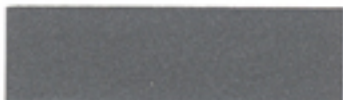


WEATHERED ZINC SR:0.25 E:0.83



COPPER PENNY SR:0.45 E:0.85

METALLIC FLUROPON CLASSIC® PVDF COLORS



MEDIUM GRAY SR:0.32 E:0.87



LIGHT BRONZE SR:0.49 E:0.85

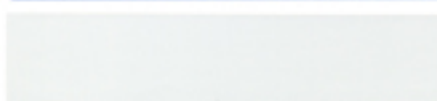


CHAMPAGNE GOLD SR:0.38 E:0.86

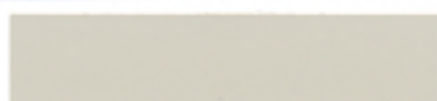


BRIGHT SILVER SR:0.55 E:0.85

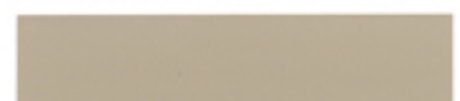
IN-STOCK DYNAPON® COLORS - MODIFIED POLYESTER



USDA IMPERIAL WHITE (30 gloss)
SR:0.62 E:0.86



SANDSTONE SR:0.52 E:0.85



SURREY BEIGE SR:0.44 E:0.86

SR - Solar Reflectivity E - Emissivity
CRRC rated products are available upon request.

RIGID
BUILDING SYSTEMS

18933 Aldine Westfield • Houston TX 77073
Toll Free: 888.467.4443 • Phone: 281.443.9065 • Fax: 281.443.9064
www.rigidbuilding.com

Valspar

S
T
A
N
D
A
R
D

P
R
E
M
I
U
M

S
T
O
C
K

Valspar FLUROPON SPECIFICATIONS

Property	Test Method	Specification ¹
Dry Film Thickness (nominal)	ASTM ² D 1400 ASTM D 1005	0.20 - 0.30 mil primer 0.70 - 0.80 mil topcoat
Gloss	ASTM D 523, measured at 60° ASTM D 523, measured at 85°	15 +/- 5 10 or less
Pencil Hardness	ASTM D 3363, Eagle Turquoise	HB - H
Flexibility	T-Bend	ASTM D 4145, No Adhesion Loss
	Mandrel	ASTM D 522, 180° bend around 1/8" mandrel
Adhesion	ASTM D 3359	No Adhesion Loss
Reverse Impact	ASTM D 2794 3000 x inches of metal thickness (lb-in)	No Cracking or Adhesion Loss ³
Abrasion Resistance	ASTM D 968 To expose 5/32" diameter of metal substrate	65 +/- 10 liters
Graffiti Resistance	Cleanability of Defaced Panels; spray paint, pens	No Effect
Acid Pollutant Resistance	ASTM D 1308 20% sulfuric acid, 18 hours	No Effect
	10% muriatic acid, 15 minutes	No Effect
Salt Fog Resistance	ASTM B 117 5% salt fog @ 95°F	Passes ⁴ 1000 hours
Cyclic Salt Fog UV Exposure	ASTM B 5894, 2016 hours	Passes ⁴ 2016 hours
Humidity Resistance	ASTM D 2247, D 714 100% relative humidity @ 95°F	Passes 1500 hours
Color Retention	ASTM G 153, G 154 Accelerated Weatherometer	Passes ⁵ 5000 hours
	ASTM D 2244 Florida exposure, 10 years @ 45° South	Maximum 5ΔE units change (Hunter)
Chalk Resistance	ASTM D 4214 Florida exposure, 10 years @ 45° South	Maximum chalk is a rating of 8

TRADEMARKS: Fluropon, Fluropon Classic, Dynapon and the Valspar logo are registered trademarks of The Valspar Corporation. Energy Star is a registered trademark of the Environmental Protection Agency.

NOTES:

- 1 - Cladded Steel: 50% AL-ZN steel, or extra smooth HDG (G-90) with minimum spangles. 2 - American Society for Testing and Materials.
- 3 - Excluding substrate or zinc cracking in the metallic coating. 4 - Less than 1/8" maximum average creepage from scribe, none or few #8 blisters in the field.
- 5 - No objectionable chalking, color change or adhesion loss.
- 6 - Color chips shown are within limits of chip reproduction but are not necessarily accurate due to printing process and viewing conditions.
- 7 - Metalescent colors are mica or metallic colors, such as Silver. Micas are 2-coat without clear coat. Metallics are 3-coat systems with clear coat.
- 8 - Metalescent colors are directional colors and will have minor differences with each production run.
To minimize these effects of metalescent colors, all material for the project should be painted together.
- 9 - Contact Rigid for optional aluminum facings.

