



Providing exceptional service and products for
Steel Buildings, Building Components, Blast Buildings,
Bridges, Real Estate and Construction Services.



www.RigidGlobalIndustries.com



Proudly serving the International Market for over 30 years.

Rigid Global Industries entered the market place with a clear goal and vision - to conquer the Metal Building Industry - the Heavy Structural Steel Market - the Metal Building Component Business - Blast Resistant Buildings - and soar in Commercial Real Estate Development on an international, global level by offering superb customer service, quality that is second to none, and competitive pricing.



Rigid Global Industries

Buildings Division

Components Division

Blast Division

Bridges

Services

Real Estate

International Relationships



MISSION STATEMENT

Working united as a team, we will routinely examine our internal business operations with the intent to encourage innovation and strive towards the ultimate achievement...

EXCELLENCE!

Excellence is not an occurrence, it is the product of the conscientious efforts of our employees.



The birth of Rigid Global Industries has been a long time in the making - starting in 1990 as Rigid Structures - Rigid was an Engineering Consulting Firm offering engineering services to the metal building industry. As the industry evolved, so did Rigid. In 1993 Rigid became Rigid Building Systems and began to offer Pre-Engineered Metal Buildings in addition to their extensive line of engineering services.

Over the course of the next 27 years, Rigid saw tremendous growth and achievement. In 2009 the metal building industry along with the entire US economy took a hard hit. In order to stay strong Alex Ghodsi looked to the international market for assistance and in January partnered with Jinhuan Steel Structures to become Rigid Global Industries.

Rigid Global Industries can now offer a myriad of products and services with exceptional service and competitive pricing.



- ◆ Rigid Global Buildings
Metal Buildings and Structural Steel
- ◆ Rigid Global Components
Metal Roof Panels, Secondaries, Structural, and Accessories
- ◆ Blast Buildings
Pre-Engineered Metal Buildings designed to be Blast Resistant
- ◆ Rigid Global Bridges
Road and Pedestrian Bridges
- ◆ Rigid Global Services
Engineering, Drafting/Detailing, Project Management, Erection
- ◆ Rigid Global Real Estate
Development and Leasing Opportunities

Through **Innovation** we are able to stay on the leading edge of the industry with design, engineering and manufacturing. With **New Technology** we are able to be more effective and efficient resulting in **Better Products**. Because of our innovative techniques, outstanding relationships and dedication and are able to offer our products with a **Global Reach**.



Rigid Global Industries employs over 1,700 employees throughout their 6 locations. Rigid employees are the industry leaders in manufacturing, sales, marketing, engineering and design. With over 100 engineers (civil and structural engineers) on staff including Professional Engineers, Rigid strives to provide excellence through engineering and design.

Talent is a valuable resource at Rigid Global Industries, it is the fundamental source of sustainable development and management. The concept of "Make the best use of everyone, Multi-dimensional development" carries over from the Mission Statement into the day to day business activities of the employees. With our professional and talented team we are fortunate to be able to strive every day as industry leaders.

VISION OF THE BOARD

Combined with the capabilities of the entire Rigid Team, Rigid Global Industries will provide the best design and fabrication with the most competitive price into the Global Market.



Alireza Ghodsi, PE

Chairman of the Board/Chief Executive Officer

Alireza (Alex) Ghodsi is a registered Professional Engineer. Alex has been a key factor in the design of pre-engineered buildings for over 38 years. His international relationships have allowed Rigid to conduct business on a Global / International level.



Bowen Lo, MBA

President/Chief Operating Officer

Bowen Lo, MBA was the leading factor behind the new relationship between Jinhuan and Rigid. Bowen, an industry professional, oversees the financial stability of the company.

As a member of the executive committee Mr. Lo represents the Chinese investors on the day to day operations of the company.

QUALITY MANAGEMENT

Rigid Global Industries strives for excellence which requires certifications for employees, products and manufacturing. Employee certifications include Professional Engineers, MBA's, LEED Certified individuals and Certified Welding Inspectors.



Rigid maintained AISC certification until 2009 when the program ended. The Metal Building Manufacturer's Association (MBMA) adopted a new certification process with the International Accreditation Service (IAS) for metal building manufacturing facilities. The IAS AC-472 certification ensures the metal building manufacturing process addresses the highest quality assurances, manufacturing procedures as well as the design and safety of the buildings. The criteria covers all system elements that are essential for code approval. Rigid's Houston manufacturing facility first achieved the IAS AC-472 certification July 2, 2012 and continues to maintain the certification.



AISC (American Institute for Steel Construction)

Although AISC no longer provides certification for the quality of pre-engineered metal buildings they do offer certification for structural buildings. Rigid Global Buildings does maintain the AISC Certification for Steel Building Structures.

Underwriters Laboratories

Underwriters Laboratories offers the highest certification marks available in the metal building industry. For over 100 years, UL has developed standards to improve the performance of roofing materials. Those products that have achieved this certification are marked with the UL symbol. Rigid has achieved UL listings under the UL580 Class 90 and Class 4- 2218 for through-fastened metal panel roof systems. Class 90 products have achieved wind and uplift rating to withstand winds up to 90 mph. Class 4 - 2218 certification is achieved for hail and impact ratings. Hi-Tech Series, Platinum Series, "R" and "PBR" panels have all been UL 580 Class 90 approved. In addition to UL 580, Rigid's R panel has been tested and certified with UL 2218 Class 4 for hail and impact.



Factory Mutual

Factory Mutual is an insurance group which created the Factory Mutual Research Corporation (FMRC) to research, develop and maintain loss prevention standards and to provide assistance to their insurance companies. Rigid offers two FM options FMRC Approved Standard 4471 - Class Roof Panels and FM Loss Prevention Data Sheets. Standard 4471 includes approval for wind uplift, fire, hail and foot traffic. The Data Sheets (1-28 Design Wind Loads) are used for selecting the appropriate FM roof system wind uplift rating and the proper determination of wind load requirements on building components cladding and their immediate supports. The requirements of the Loss Prevention Data Sheet can be incorporated into the design of a building in a manner similar to the IBC.



ENERGY STAR



All of the color selections Rigid offers are Energy Star rated. Energy Star was created to help reduce greenhouse gas emissions and other pollutants. Rigid's participation in the Energy Star program shows a devoted commitment to today's environmental issues.

AISC (American Institute for Steel Construction)

Jinhuan Steel Structures / Rigid Global Buildings China has received their AISC Certification for Steel Building Structures and Simple Steel Bridges.

Jinhuan Steel Structures / Rigid Global Buildings China has a Grade-One professional contracting and Grade-A steel structures design qualifications, and has been certified by the ISO9001:2000 quality system. It is a private "Double-High" company with high technology and high-tech products approved by the Hebei Province Science and Technology Bureau with awards for an excellent private enterprise, AAA credit unit and many domestic high steel structure prizes.



According to the complete ISO9001 Quality Management System, Jinhuan Steel Structures has made a strict production process; advanced purchasing and testing equipment, setting up professional physical and chemical laboratories, careful inspection for each step from raw material purchase to finished product, strictly processing the accordance with applicable drawings, technology and standards to ensure every step is checked by quality control, and no defective piece will flow to the next process. JH - Rigid Global China is also an approved vendor for Bechtel.



Global Locations



RIGID GLOBAL BUILDINGS
Headquarters / Manufacturing
18933 Aldine Westfield
Houston, Texas 77073
USA

Tel. 281-443-9065
Toll Free: 888-467-4443
Fax. 281-443-9064
E-mail: sales@rigidbuilding.com
Website: www.rigidbuilding.com

RIGID GLOBAL BUILDINGS
Structural Manufacturing Facility
18911 Aldine Westfield
Houston, Texas 77073
USA

Website: www.rigidbuilding.com

RIGID GLOBAL BUILDINGS
Regional Sales Office
9250 East Costilla Ave, Suite 325
Greenwood Village, Colorado 80112
USA

Tel. 303-799-4579
Toll Free: 800-658-2885
Fax. 303-799-6377
E-mail: sales@rigidbuilding.com
Website: www.rigidbuilding.com



RIGID BUILDINGS NIGERIA

International Office
470 Akin Lagunda Drive
Off Adeniyi Jones Street
Ikeja, Lagos, Nigeria

Tel. (234) 803-326-3130
Fax. (234) 703-622-6643
E-Mail: nephillips@rigidbuildingnigeria.com
Website: www.rigidbuildingnigeria.com

**RIGID GLOBAL BUILDINGS
AL-QURA CO.**

International Office
14th July Street, Abu Shear Intersection
Oman Sector, Building 199
Basrah, Iraq

Tel. 964-780-1009710

**RIGID GLOBAL BUILDINGS CHINA
JINHUAN STEEL STRUCTURE**

International Office / Manufacturing
160 Huang Road,
High-Tech Industry Development Zone
Shijiazhuang, Hebei Province, China 050035

Tel. 0311-85830888
Tel. 0311-85967897
Fax. 0311-85967899

E-mail: jinhuansteel@china.com
Website: www.jinhuansteel.com



Rigid Global Buildings has developed a state-of-the-art manufacturing facility and material work flow system that is the best in the industry. Our innovative use of technology and CNC machinery provides the highest quality building systems available at competitive pricing that gives the customer substantial savings.

As a single source manufacturer, your Rigid building is engineered and manufactured as a system with all of the components necessary to insure fast - on site erection! Rigid provides a revolutionary estimating program to allow our clients to competitively price buildings with canopies, fascias, partitions and more in a matter of minutes. Rigid's professional staff of engineers and architects can estimate and design the most complex buildings. Upon initiation of a contract, our innovative programs provide computerized design, erection drawings and bill of materials for expedited delivery.

Our steel systems construction offers value on any low or high-rise



commercial building need. From retail space - to a light industrial center - to a busy community center - Rigid Global Buildings provides aesthetically pleasing, cost efficient space. At Rigid, you have the ability to customize your building as you want.

Many design build projects require structural engineers to work directly with the architect during the conceptual design stages to determine the structural framing requirements for these types of special projects. Rigid's engineering expertise becomes evident for these types of structures. With over 100 years of professional engineering experience on staff, Rigid can offer innovative and economical structural solutions to these complex structures.



888-GO-RIGID

AGRICULTURAL BUILDINGS

Riding Arenas - Horse Barns - Dairy Barns - Ag Confinement Buildings

We know how important your farm or ranch is to you, that is why we design buildings to meet the unique needs of the agricultural market. From clear span designs to bay spacing that meet the demands of your project, we can provide you with the correct building for your project needs.

AVIATION - HANGARS

Single Hangars - Hangar Homes - Commercial Hangars

Rigid Global Buildings provides building systems for every segment of the aviation industry. Whether it is a small private hangar for your hobby plane or an executive hangar for a corporate jet, Rigid is ready to assist you in designing a hangar to meet your needs and your budget.

Each hangar can be individually engineered to meet specific requirements. Depending on what your requirements are, there are a variety of doors available for your hangar including: bi-fold, tilt-up and large double sliding. Hangars may be designed using a gable symmetrical, gable unsymmetrical or single slope structural systems.

COMMERCIAL BUILDINGS

Commercial Strip-Centers - Stand Alone Buildings - Dealerships - Marinas - Banks

When building a commercial project you should choose the most cost effective solution on the market today - a pre-engineered steel building from Rigid Global Buildings. Our building lengths and widths are virtually limitless to accommodate any commercial need at an affordable price. Steel buildings do not have to look like box buildings anymore, we offer a variety of siding to enhance any project with a stone or rock facade to a clean stucco look. Rigid is here to make your building look the best it can - and stay in the budget you want.

INDUSTRIAL FACILITIES

Warehouse Buildings - Manufacturing Facilities - Industrial Plants

Our customers appreciate our vast knowledge in the design and fabrication of industrial related buildings worldwide. Rigid has supplied a large variety of industrial buildings including warehouses, manufacturing facilities and industrial plants, and generator and compressor buildings. Industry leading experience allows us to deliver a quality product at a competitive price to exact standards and specifications.

INSTITUTIONAL BUILDINGS

Fire Stations - Libraries - Court Houses - Health Care Facilities - Educational Facilities

Institutional buildings can be extremely complex when it comes to detail, which is why Rigid excels in the manufacturing of Institutional buildings.

Whether you need a school, hospital, gymnasium, fire station or courthouse - give Rigid a call and let us show you the importance of detail.

WORSHIP FACILITIES

Worship Facilities - Recreation Centers - Community Centers

Rigid Global Buildings realizes that no two worship facilities or congregations are alike. That is why we offer building systems that are fully customizable to accommodate your worship needs at a price your membership can afford. By combining the metal building system with conventional exterior materials such as brick, stone, wood, stucco or RigidRock™, the structure can be aesthetically appealing while providing the perfect solution to your worship needs.

STEEL HOMES

Custom Designed - Basic Elevations

Rigid also offers the latest in green home building - steel homes. Steel homes are becoming a popular alternative when designing and building residential homes. Steel homes can be simple single story houses or multi-story estates .

Agricultural Buildings



Isabella Farms
Cypress, TX



Justus Equestrian Center
Larkspur, CO



Lehman Equestrian Center
Bentonville, AR

Aviation Buildings





X-Jet
Centennial, CO



Wing Aviation
Houston, TX



X-Jet
Centennial, CO

Industrial Buildings



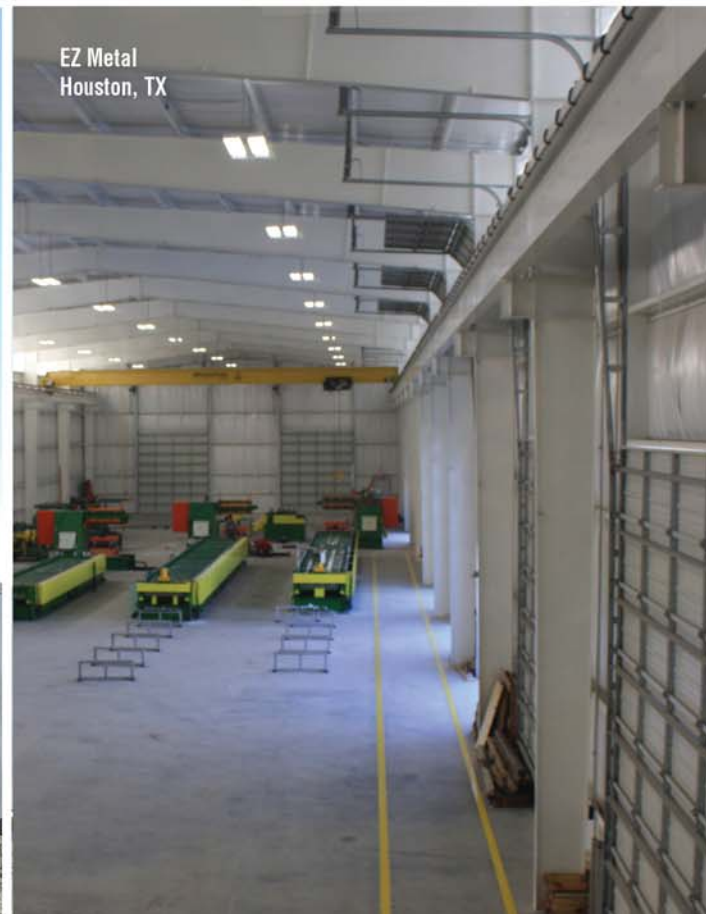
NASA Space Center
Houston, TX



TNRG
Houston, TX



EZ Metal
Houston, TX



Institutional Buildings



World Champion Centre
Spring, TX



Harmony Nature School
Dallas, TX



Foothills Sports Arena
Littleton, CO

Religious Facilities





Summit Christian Center
San Antonio, TX



Cao Dai Temple
Houston, TX

Steel Homes

Steel Home
Houston, TX



Private Ice Rink
Parker, CO





The design of Steel Homes can be as vast or as simple as the individual home owner. Each Steel Home is custom designed to meet the criteria of the home owner.

Steel Homes no longer have to look like metal buildings from the outside - but it is the inside that matters. The strength and peace of mind that comes with a steel home is priceless. Over the last decade, there has been countless reports of devastation throughout the world due to natural disasters such as tornadoes, hurricanes, and fire - and through them all houses with a metal roof or steel frame have been rendered virtually unscathed.

Steel in general goes through numerous engineering and testing to ensure they will stand up to mother nature, but they do not have to look like metal boxes anymore. A steel framed house can be built out just like any other house in the market today.

When it is time for you to build your next home give Rigid a call and see for yourself all of the advantages Steel has to offer.



Rigid Global Building's building process can be as involved as the project dictates. Rigid is capable of offering the following services for all Steel Building Projects:

- Project Management
- Design/ Engineering
- Fabrication
- Construction Management
- Site Construction (slab/ civil work)
- Erection
- Inspection

PROJECT MANAGEMENT

Rigid's team of experienced project managers have the ability to manage a project from inception to completion. All of our experienced Project Managers have international experience to handle the myriad of different instances as they arise.

DESIGN / ENGINEERING

Rigid has detailed engineering capabilities with over 100 engineers. We can design and produce the necessary drawings through all phases of construction: Civil, Structural and MEP. Our Registered Professional Engineers on staff will stamp all drawings. In addition we have the ability to meet all international codes and standards.

FABRICATION

The capacity of the US manufacturing facility combined with the China manufacturing facility accounts for over 2 Million square feet. With the appropriate machinery including heavy structural shop equipment our manufacturing facilities have the capability to produce bridges, space frame buildings, petrochemical platforms, hi-rise structures and bridges.

CONSTRUCTION MANAGEMENT

The Rigid construction group has the ability to handle any project ranging from small simple projects, large industrial complexes or commercial projects. Rigid Global Buildings has the experience and knowledge to make sure your project is constructed using the appropriate methods and standards in today's industry.

SITE CONSTRUCTION

Rigid's construction crews are available to travel to any job site including domestic and international. From the first drawing to the finished product, our team is there on site for your project.

ERECTION

Experience and training are crucial when erecting a metal building. Our experienced crews have all graduated from our Erection Program and are AISC Certified. They are available to travel to any job site, domestic or international. They are qualified to erect metal and structural buildings from low rise applications to high-rise hotels/business centers.

INSPECTION

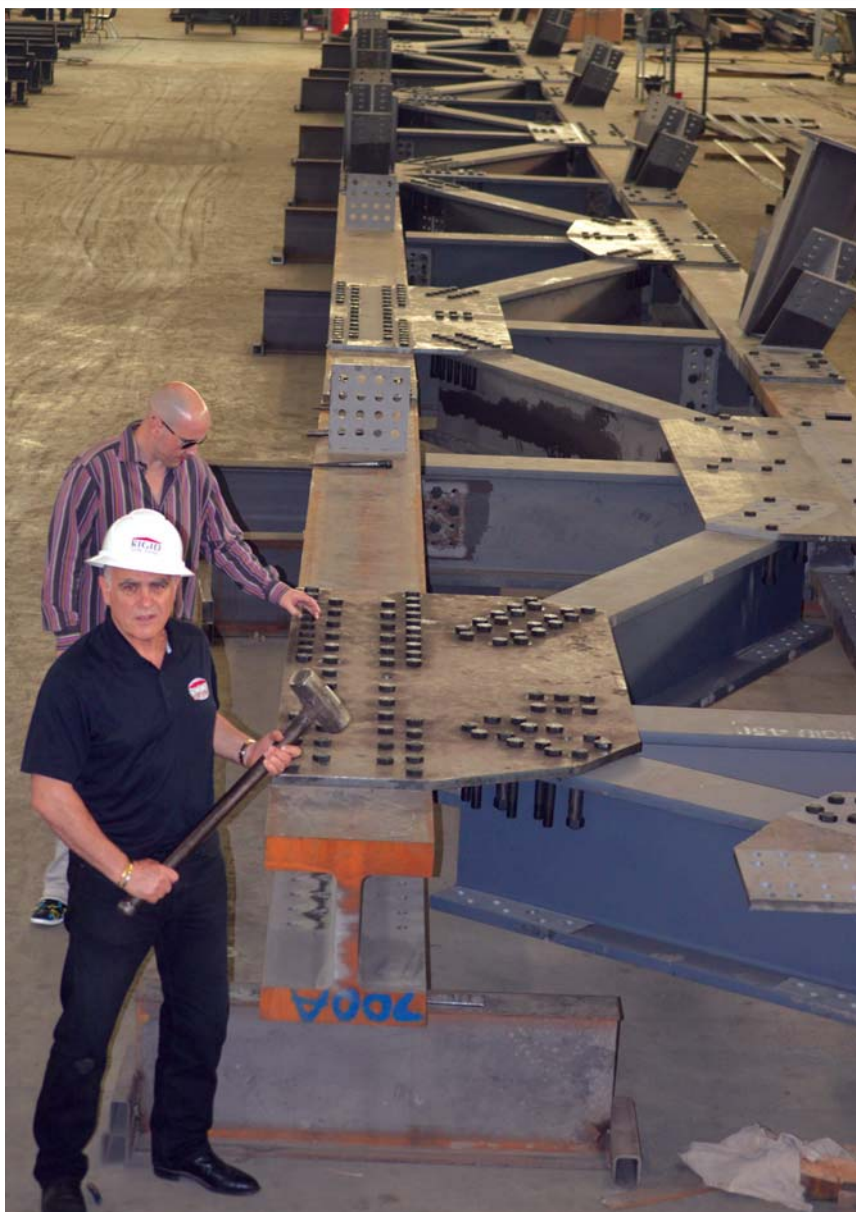
Rigid Global Buildings does offer inspection services from our staff of Professional Engineers. They can be hired to inspect all aspects of a construction project from start to finish. Their service can be tailored to every individual job and need.



Rigid Global Buildings has developed a state-of-the-art manufacturing and material work flow system. Our innovative use of technology and machinery provide the highest quality building systems available at a competitive price that gives you - the customer - extra savings. Rigid provides detailing and fabrication capabilities ranging from a single-story to multi-story.

Service is delivering a quality product on time and fabricated to exact standards using automated CNC controlled machinery and robotics throughout the manufacturing process. With nearly 200,000 square feet dedicated to structural fabrication Rigid Global can handle virtually any project.

Rigid's professional staff of engineers can assist with any and all technical inquiries. All welding and welders are qualified in compliance with AWS - and D1.3 codes of construction. Management includes a welding engineer with over 35 years experience in the field of welding and an AWS Certified Welding Inspector (CWI).





STRUCTURAL HIGH-RISE PROJECTS

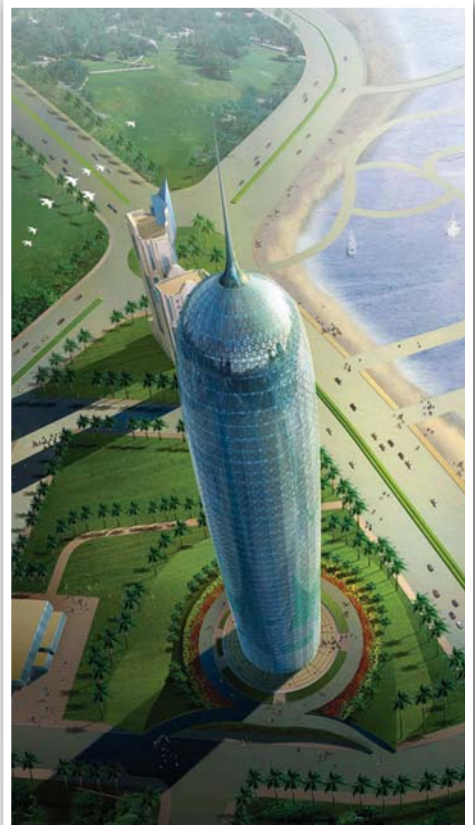
Structural High-Rise projects require a great deal of detail and planning which is where Rigid excels. With an in-house staff of engineers and designers each project is given the utmost attention to detail, safety and codes. Rigid buildings whether they be low rise applications or High-Rise applications are designed and built to last.





QATAR DOHA HIGH-RISE OFFICE BUILDING

The total height of the building is 235 meters, with 45 floors. Its construction area is 113,000 m². So far, it is the highest architecture which is under construction. From architectural features, size and level, it is entitled the landmark structure of locality.





EASY HOME MANSION
CHINA

Base HQ building of Easy home Investment Holding Ltd. Designed to be steel and concrete frame-core structure. Total construction area reaches 59,094 m², and consists of 3 floors underground and 17 above ground. The height is 70 meters.



DISEASE CONTROL & PREVENTION
SHANXI PROVINCE, CHINA

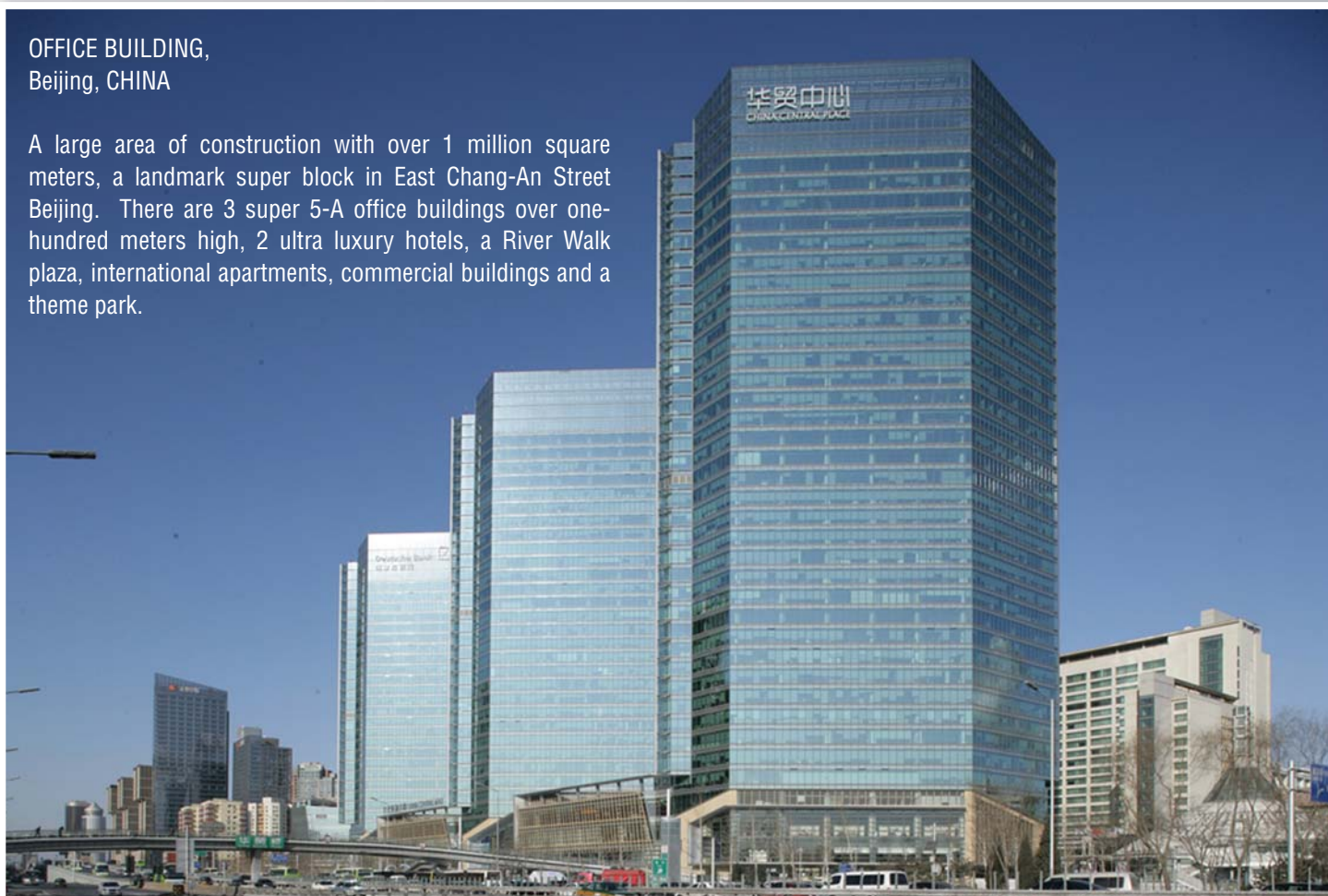
First high-rise steel structure office building in Shanxi Province which adopt steel-tube concrete frame structure.



TRANSPORTATION TERMINAL
BEIJING, CHINA

OFFICE BUILDING,
Beijing, CHINA

A large area of construction with over 1 million square meters, a landmark super block in East Chang-An Street Beijing. There are 3 super 5-A office buildings over one-hundred meters high, 2 ultra luxury hotels, a River Walk plaza, international apartments, commercial buildings and a theme park.





Kaiyuan Garden Future Mall CBD
CHINA

Future Mall CBD is a landmark building and one of the 100 key construction projects in Shijiazhuang. More than 10 new technologies popularized in the construction industry were utilized. This building covers 420,000m², with a total height of 99.8 meters. So far the Future Mall is the biggest steel structure CBD in Hebei Province. The Future Mall is well known for its eight functions: shopping, a convention center, entertainment, restaurants, and recreation to name a few. The Future Mall aims to be a comprehensive building which integrates with commerce, office space and apartments.

888-GO-RIGID



JinZhou International Hotel
CHINA

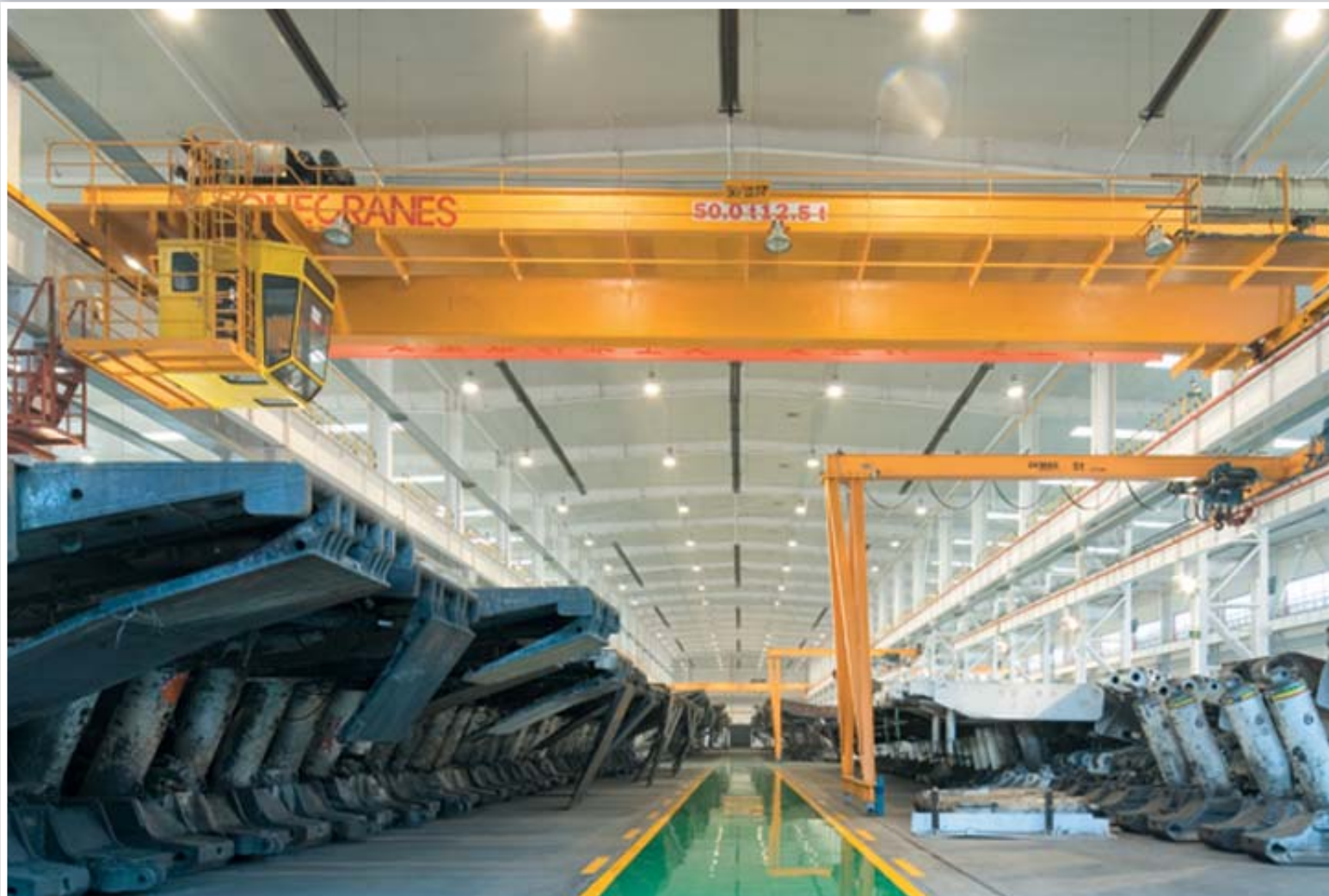
Construction area is 101,451 m². The hotel has 44 floors above ground and 2 levels underground. The total height of the hotel is 181.80m.





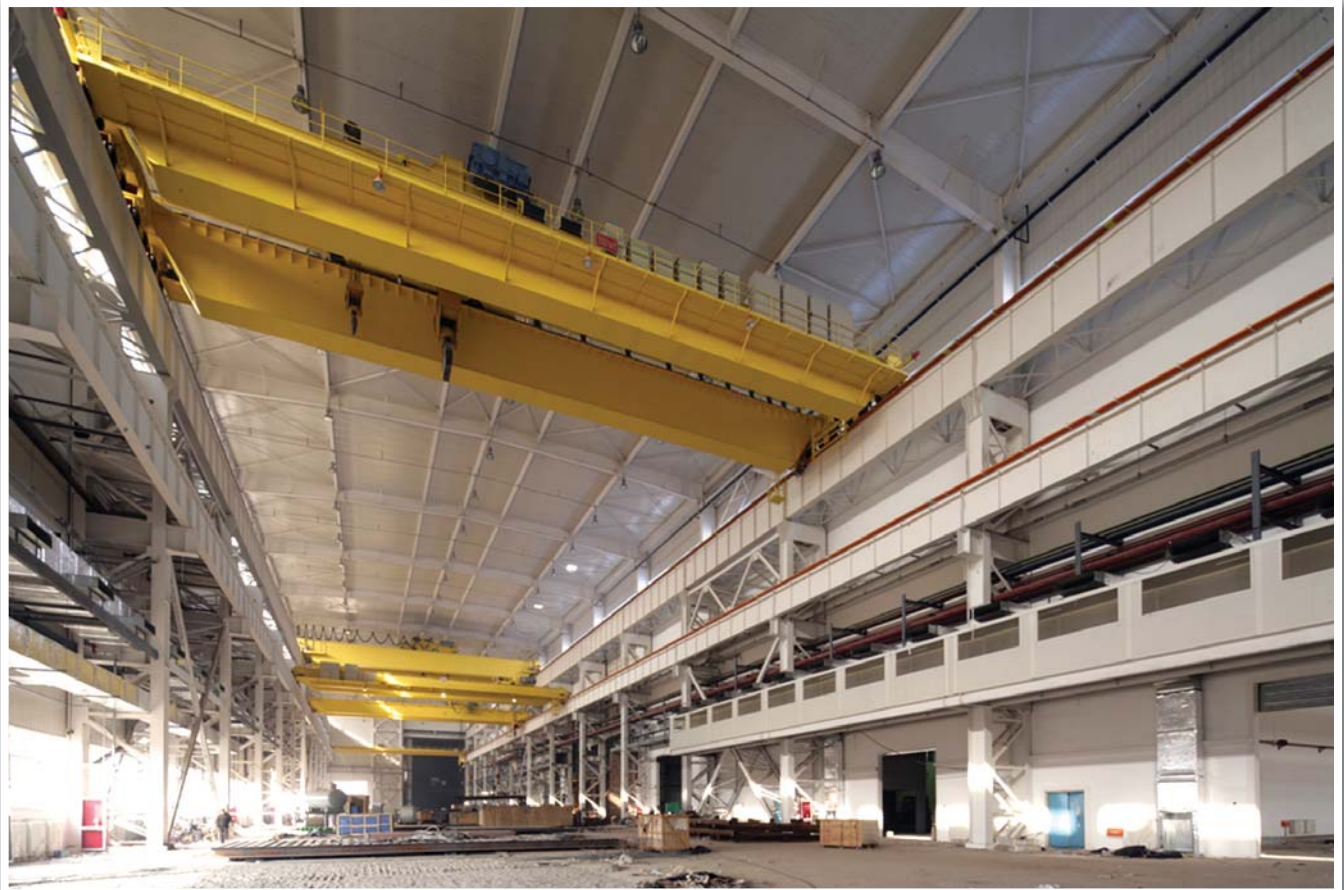
Mechanical and Electrical
Professional Service Center at
ShenDong Mine.
< First Hydraulic Support Repair
Shop

V Second Hydraulic Support Repair
Shop



Extension Engineering
ChangQing, CHINA

Extension Engineering (Large transformer and welding workshop) of ChangQing in the new factory zone for Ji Nan Transformer Group. Construction area is 41,161.87 square meters. It is a comprehensive industrial factory built with a portal frame heavy steel structure.



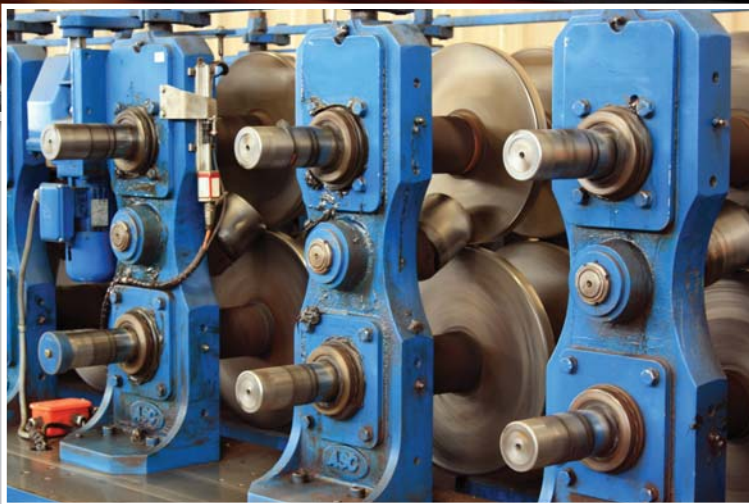




Rigid Global Components offers the highest quality of metal roof and wall panels in the industry today. Adopting the material work flow system from Rigid Global Buildings, Rigid Global Components can provide you with standing seam and commercial roofing, metal siding and trim, structural Cee's and Zee's and accessories in the metal roofing industry.

As a single source manufacturer, your metal roof and wall panels are manufactured as a system with all of the components necessary to insure fast - on site installation. When you provide Rigid Global Components with your cut list, we help you determine the best possible product(s) for your project. If you need assistance with your project our engineering and estimating department is here to help.

Our metal roof and wall panels are available in 24 and 26 gauge material and are offered in standing seam and through fastened panels. In addition we also offer structural components such as Cee's, Zee's, Angles, and also coils.

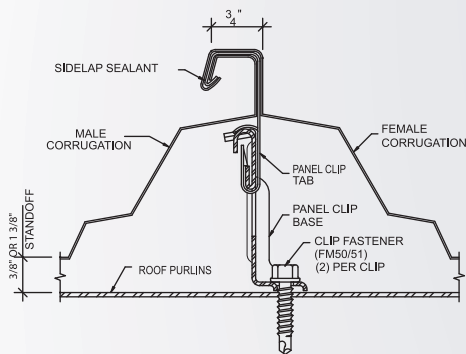
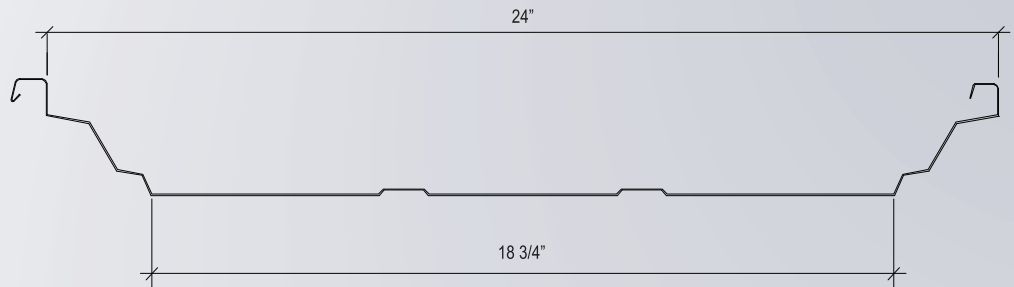


SPECTRALITE 3000 Architectural Color Selection Standing Seam Roof Systems

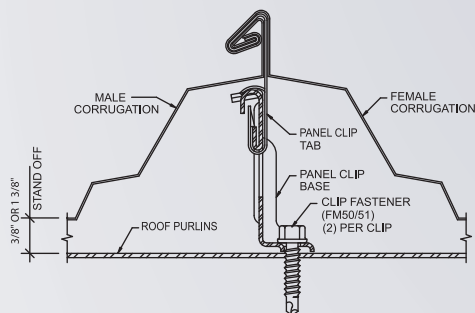
HI-TECH Series Roof Panel

Rigid Global Components Hi-Tech Series Roof System utilized the TS-364 panel system's technology which provides superior wind and weather protection under all loading conditions.

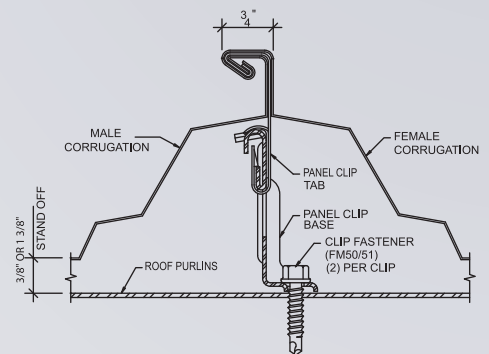
Utilizing a unique patented seam design, this series offers three lock seam features



EZ-LOK



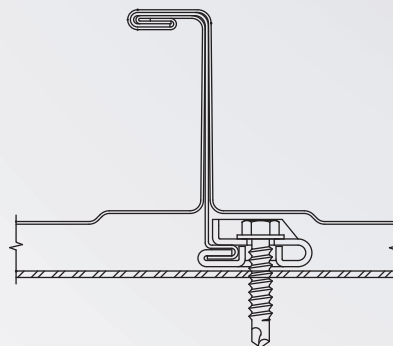
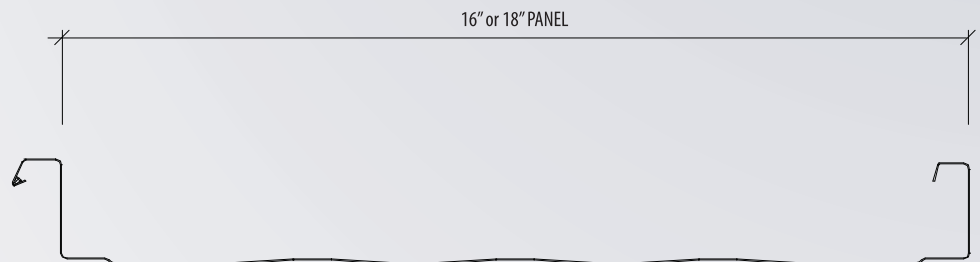
QUAD-LOK



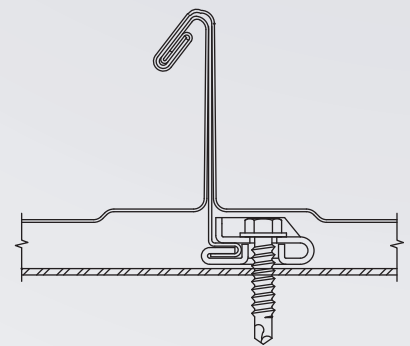
TRIP-LOK

PLATINUM Series Roof Panel

Rigid's Platinum Series is a revolutionary patented standing seam roof system that incorporates two unique systems: The Triple-Lok seam for normal wind speeds, and the Quad-Lok seam for coastal areas and other high wind speed zones.



TRIP-LOK



QUAD-LOK



888-GO-RIGID

Metal Roofing has come a long way in the green aspect, it has turned into one of the greenest, environmentally friendly products in the roofing market today. It can offer green qualities such as recyclability, longevity, energy savings and most recently solar.

Rigid Global Component's Benefits include:



RECYCLABILITY:



All of Rigid Global Components are manufactured with recycled material and can be recycled at the end of their life cycle thus reducing today's landfills. In addition to being recycled, our sheeting and trim material is manufactured with 23% post-consumer recycled content.

LONGEVITY:

The Metal Building Industry in general is one of the toughest industries when it comes to codes, standards and testing. All metal roof and wall panels are tested to withstand today's codes and standards regarding wind, hail, rain and pressure. Rigid's roof and wall panels have been tested and rates for UL Class 90 and Class 4 2281 for hail impact and wind uplift. Rigid Global Components are designed to last through the best and worst of weather conditions.

ENERGY STAR:

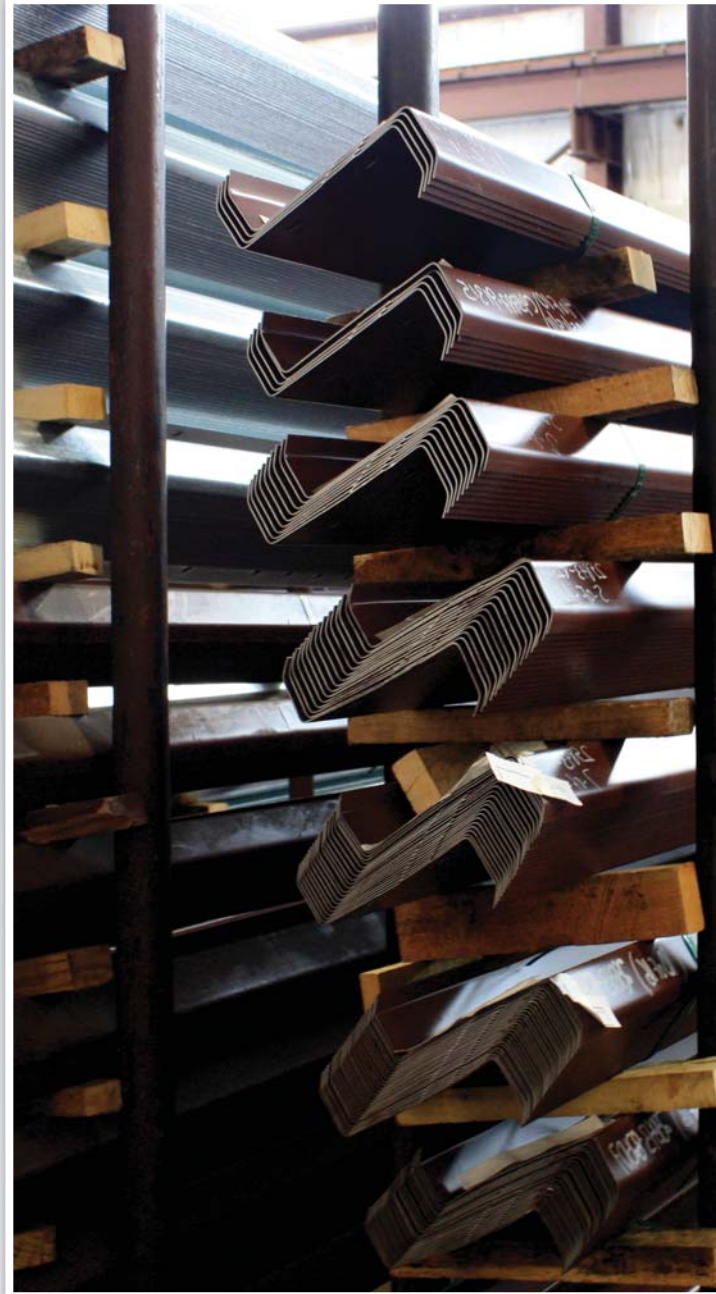
Rigid Global Buildings has over 30 colors that have been tested and approved under Energy Star including Gallery Blue, Colonial Red, Brandy Wine, and Evergreen to name a few. Please refer to our color charts for a complete list of our Energy Rated colors.



By choosing an Energy Star rated product, you are helping the environment through lower cooling costs and reducing the urban heat island effect. Energy Star rated colors have been proven to save up to 20% in cooling costs.

SOLAR:

Solar photovoltaics are the newest product to be introduced into the Metal Roofing industry. Metal roofs are a great medium for either the standard crystalline solar panels or the newest laminate amorphous photovoltaics because of their durability, ability to withstand added weight, and most importantly ease of installation. To learn more about Solar and metal roofing contact your District Manager today.



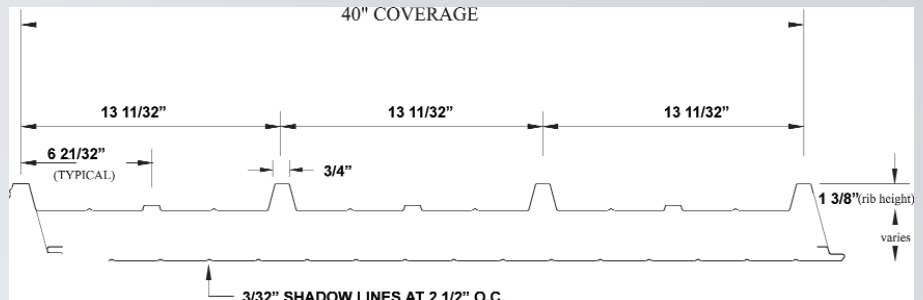
Give us a call at 888-GO-RIGID to get started today!

RHR-9000 High Rib Roof Panel

This versatile insulated panel is equally impressive for exterior wall or roof applications. Available with R-values up to 42, the RHR-9000 gets especially high marks as a roof panel for commercial buildings, recreational facilities, cold storage buildings and other low temperature applications. It is designed for use in both new and retrofit applications where speed of erection, light weight and thermal efficiency add value to the roofing system.



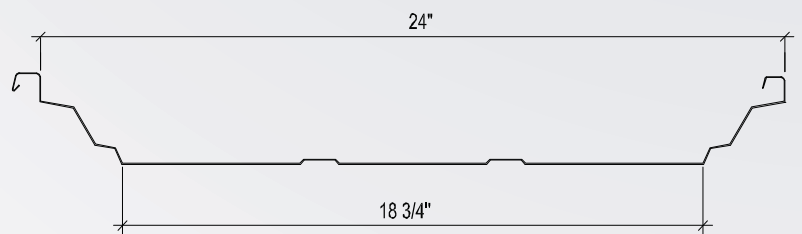
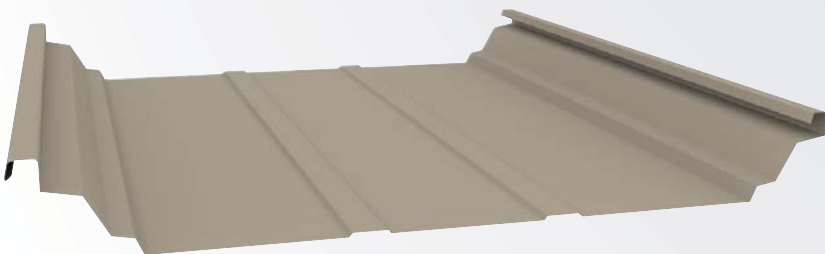
Panel Thickness: 1.5, 2, 2.5, 3, 4, and 5"
 R-value by ASTM C-236: 14.2, 18.2, 22.2, 26.2, 34.2, 42.2
 Panel Width: 40"
 Panel Length 48' 0" standard maximum



HI-TECH Series Standing Seam Roof Panel

Rigid has used the latest technology available to develop an outstanding Standing Seam metal roof system with components and techniques that outperform others by specifically addressing current and anticipated building codes and roofing requirements.

Our proven, patented seam utilizing the TS-364 panel system's technology provides superior wind and weather protection under all loading conditions, the seam geometry and seaming methods to virtually assure that your installed roof will perform as it was designed at a minimal cost.

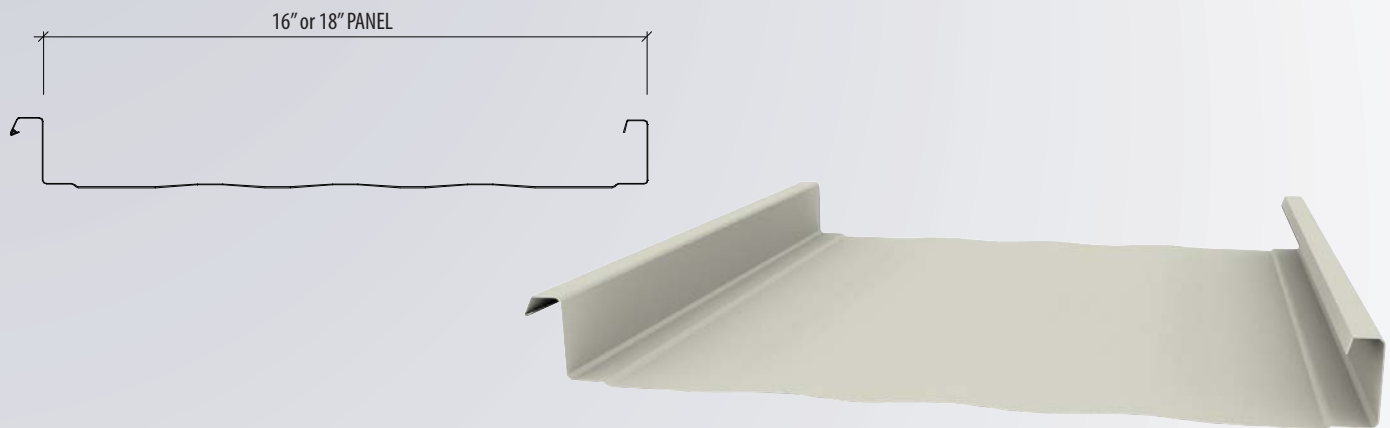


PLATINUM Series Standing Seam Roof System

Rigid's Platinum Series is a revolutionary patented standing seam roof system that incorporates two unique seams. The Triple-Lok seam for normal wind speeds and the Quad-Lok for coastal areas and other high wind speed zones.

The Platinum Series incorporates a double seam, double hook side lap design to resist seam failure between supports and side lap unfurling and unzipping. It is a roof system with tremendous strength designed to withstand the most strenuous uplift testing and highest velocity wind speeds. Combine that with its aesthetic appeal which is a favorite of architects and building owners alike, and you have an unsurpassed panel in look and quality.

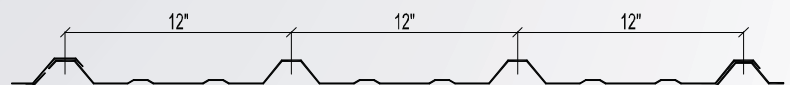
Available in all of Rigid's Spectralite 3000 Fluoropon 70% Kynar 55/Hylar 5000 colors. The Platinum Series offers you a wide range of colors to enhance the beauty of your project and give you unsurpassed coating performance for continued beauty year after year.



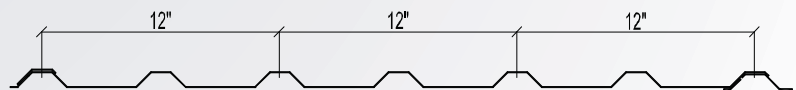
Standard Roof Panel Profiles



PBR Panel



PBM Panel





Rigid keeps accessories on hand as well to insure your building ships with all of the necessary accessories to customize your building.

- Walk Doors
- Insulation
- Fasteners



Rigid keeps insulation (left) and fasteners (bottom) on hand and ready to be included with an order. By providing all the necessary components to erect a building, Rigid is making the building process easier and more seamless.





Rigid's coil inventory constantly changes to accommodate each order. With 19 colors in stock, Rigid can turn around the roof/wall portion of an order very quickly. Custom colors and non-stocking colors are also available with a longer lead time.





Blast Resistant Buildings

For each Blast Resistant Building project Rigid will provide a comprehensive blast analysis using Dynamic modeling, coupled with the largest manufacturing capacity in Texas, Rigid is the clear choice for ensuring your clients needs and schedule are met. Blast loads to 5 psi, custom designed building layouts, and our Dynamic approach to design ensures the best price for your client.



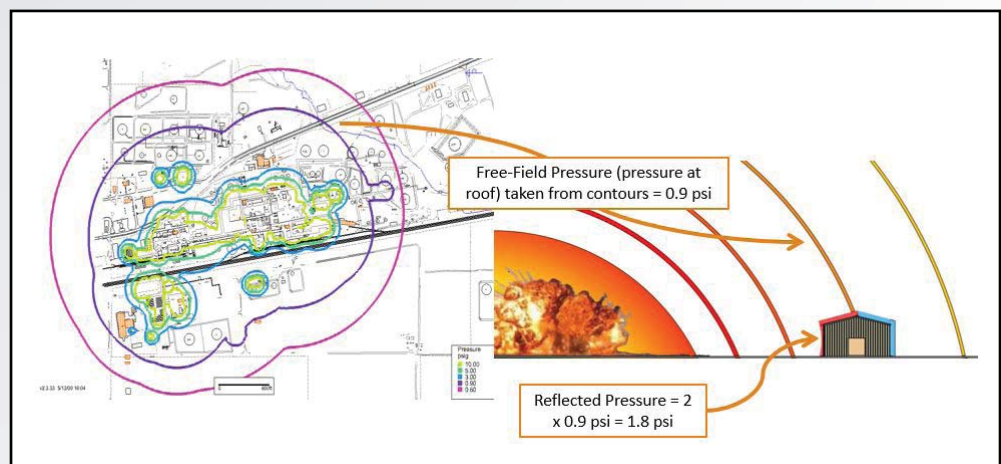
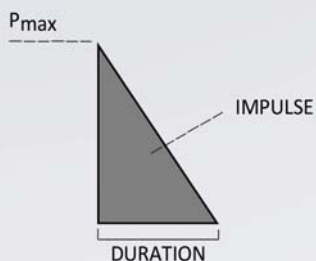
BLAST DESIGN

The requirements and design methods for a blast resistant building differ significantly from conventional design requirements. Utilizing conventional design methods and assumptions to develop a blast resistant design can result in an inaccurate or significantly over designed structure. The following table is a comparison of the some of these differences:

In order to develop a blast resistant design the required information is normally found in a building specification but is based on information from a variety of sources including the facility hazard assessment, the owner's risk criteria and the facility plot plan.

CONVENTIONAL DESIGN	BLAST RESISTANT DESIGN
Compulsory	Often voluntary
Governed by building code	Design specification selected by owner
Loads prescribed by code	Design load related to owner decision
Enforced by building officials	Exempt from building official review
Loads are static	Loads are dynamic (time dependent)
Response is elastic	Response exceeds elastic limit, can accept significant permanent deformations
Analysis is static	Dynamic analysis methods are needed
Material properties are conservative (reduced from nominal by safety factors)	Material properties are realistic (increased from nominal for dynamic effects and typical over-strength)

- **Pressure:** The pressure (or overpressure) is usually quoted in terms of free-field pressure. This is the pressure that would be applied to a flat roof surface.
- **Duration:** The duration is the length of time that the pressure wave will be applied to the building surface. The impulse, which is a function of both the pressure and duration, can be supplied instead of the duration



PEMB VS MODULAR UNITS VS CONCRETE STRUCTURES

Designing for a blast resistant Pre-Engineered Metal Building is a relatively new idea, within the last few years. Traditionally if the client wanted a structure to be blast resistant, you would design for a Concrete structure or a Modular building. While these types of construction are perfectly suitable, they can be cumbersome and have limitations. Pre-Engineered buildings have their limitations too. In most cases the PEMB blast model fits a niche area in an industrial facility. Our target zone for construction is between the 0-5 psi blast contours. When you find yourself building in this 0-5 psi zone, PEMB are the way to go for the following reasons: COST, MODIFICATIONS & CUSTOMIZATION.

COST COMPARISON:

PEMB	MODULAR	CONCRETE
When it comes to expense, the blast resistant PEMB is the best option when the blast loads are between 0-5 psi. They are typically 30% - 50% less expensive than modular units and when compared to concrete construction, they can be as much as 70% less expensive.	Most modular units are a “one size fits all” solution. Meaning you get a building that is rated to a specific blast pressure, often higher than what is required at the site. This means your client is overpaying for additional blast materials which may not be necessary. Another difficulty with modular buildings is the lack of customization. Buildings are designed in pre-designate widths, lengths and heights, not allowing for custom sizes to be designated by the client. Again they're more of a “one size fits all” method of construction.	Concrete buildings are very efficient when the blast criteria is high, for example a building needed right next to a process unit might require a 10 psi blast rating. However this form of construction becomes very cumbersome when blast load criteria falls in this 0-5 psi range. Materials costs for concrete can fluctuate based on local demand and supply can be limited. Working with large precast panels or tilt wall panels, can be cumbersome onsite requiring many laborers to be active within the refinery confines. In most facilities space can be limited and this presents major site challenges.

FUTURE MODIFICATIONS

PEMB	MODULAR	CONCRETE
Pre-Engineered buildings are very easy to modify. If, for example, in the future the process area grows and suddenly the operator finds the structure they built 5 years ago, falls into a new higher blast contour. In this scenario, a metal building could be easily retrofitted and upgraded to meet the new blast load criteria.	A modular building, may have to be torn down and replaced as future modifications are not easily achieved.	A concrete building, may have to be torn down and replaced as future modifications are not easily achieved.

CUSTOMIZATION

PEMB	MODULAR	CONCRETE
PEMB is a very customizable, any width, any length, virtually any height or ridge orientation. Exteriors of PEMB can be fitted with stone, stucco, EIFS, Hardi Board, Vinyl Siding, etc. Much like you would see in a commercial application. This is a nice feature as your client is not “stuck” with a metal building look. This opens up options for owners who want to construct an Admin type building but want the structure to be more aestically pleasing.	With modular units again you get the “one size fits all” approach, pre set dimensions and no options for dressing up the exterior. Concrete buildings offer a little more flexibility with regard to aesthetics, but still quite limited with options for the client.	With modular units again you get the “one size fits all” approach, pre set dimensions and no options for dressing up the exterior. Concrete buildings offer a little more flexibility with regard to aesthetics, but still quite limited with options for the client.



BLAST TERMINOLOGY

1.) **Static Design Modeling** - concerned with bodies at rest or forces in equilibrium. Often contrasted with dynamic (in blast design, a statically applied load means the same reflected load is applied to all 4 walls and the roof).

2.) **Dynamic Design Modeling** - of or relating to forces producing motion. Often contrasted with static. A force that stimulates change or progress within a system or process (in blast design, each wall/component is subjected to evaluation of the blast loads critical to that space).

3.) **ASCE** Design of Blast Resistant Buildings in PetroChemical Facilities.

4.) **BDL** (Building Damage Level) - Typically defined as Low, Medium, or High. Owner must decide what level of damage they're willing to accept for the structure. **High Response:** Replace entire building due to loss of structural integrity from damage. Building DOES NOT collapse. **Medium Response:** Significant repairs from widespread building damage. **Low Response:** Minor repairs from damage and building can be used again.

5.) **ASCE** (American Society of Civil Engineers) <http://www.asce.org/>

6.) **SDOF** (Single Degree of Freedom)

7.) **Overpressure** - the pressure caused by a shock wave over and above normal atmospheric pressure. The shock wave may be caused by sonic boom or by explosion



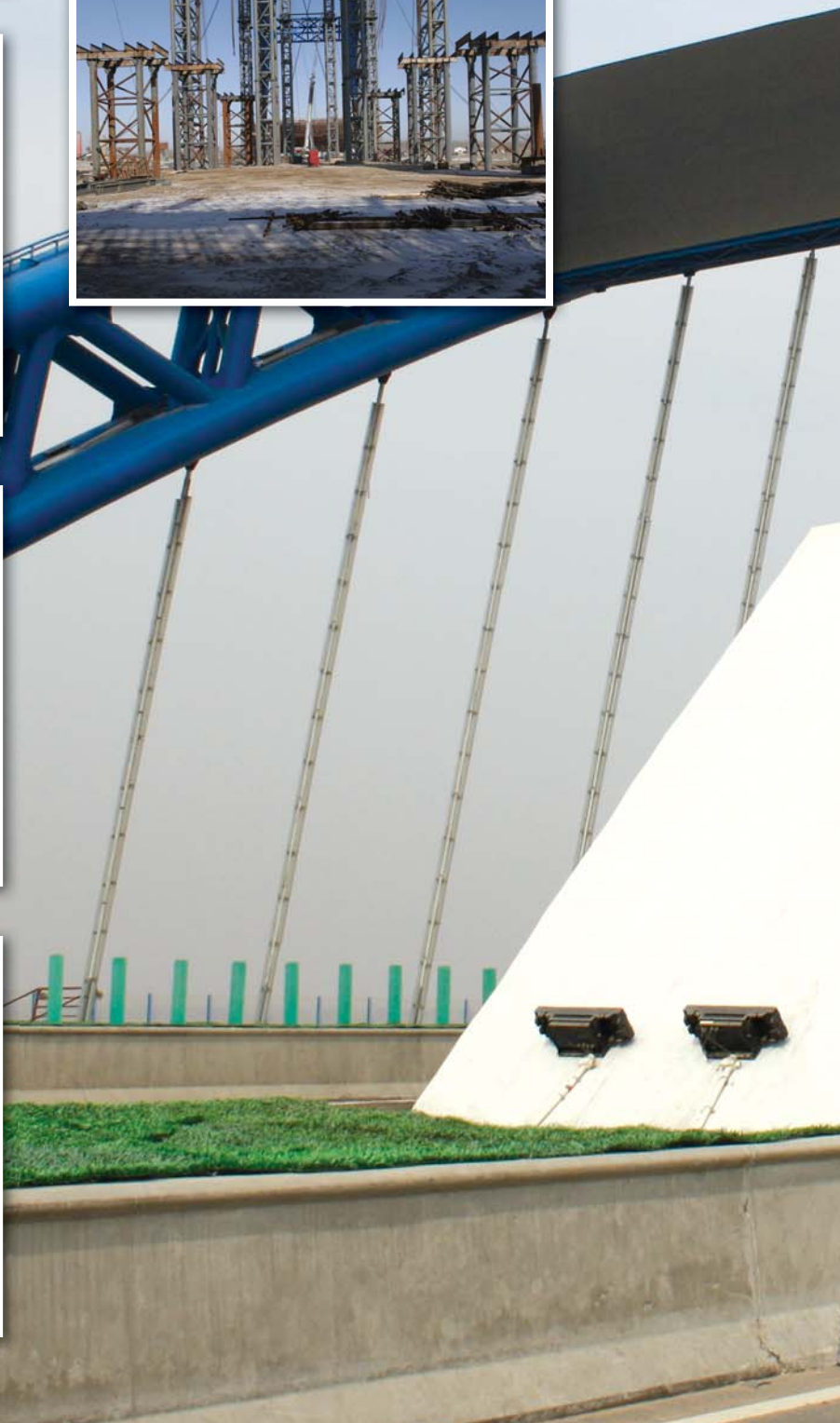
For more information on Blast Resistant Buildings please contact Aaron Westover, Vice President Energy Division at 1-888-467-4443.





Rigid Global Bridges offers both highway overpass bridges and pedestrian bridges. With an excellent research and development team, advanced technology and facilities Rigid can offer the most detailed and complex bridge regardless of size or location.







Huto River Bridge,
CHINA

The second tender section of the extension road of the north exit of Zhang-Shi Highway









Rigid Global Services is a division of Rigid Global Industries that provides services such as engineering / drafting, erection, project management, and shipping. All of our services are offered both domestically and internationally.

ENGINEERING / DRAFTING

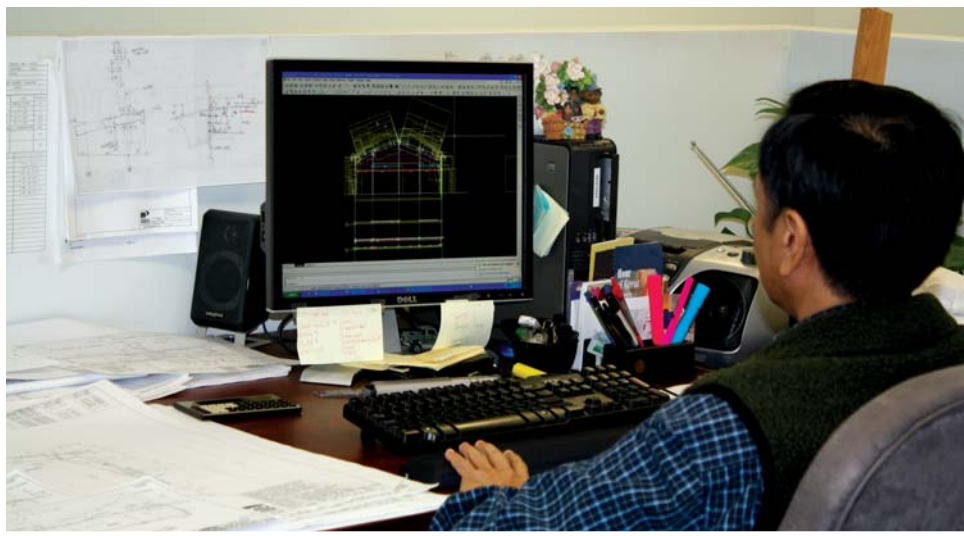
Rigid has over 100 engineers operating in our Engineering offices in Houston, Manila, Shijiazhuang, Shanghai, and Doha.

ERECTION

Whether your project is a single story or a hi-rise hotel, Rigid's Erection Services can assist you with the professional and safe erection of your building.

PROJECT MANAGEMENT

Rigid's team of experienced project managers have the ability to manage a project from inception to completion.



Rigid Global Industries has one of the best shipping departments in the industry. With national and international accounts, Rigid can offer you the best possible prices for freight forwarding. Whether your project has to go across the country or across the Pacific; Rigid can make it happen.

Part of the shipping process also includes loading and prepping of the material. The material is loaded precisely on the truck to ensure it will be secure during the transportation process.

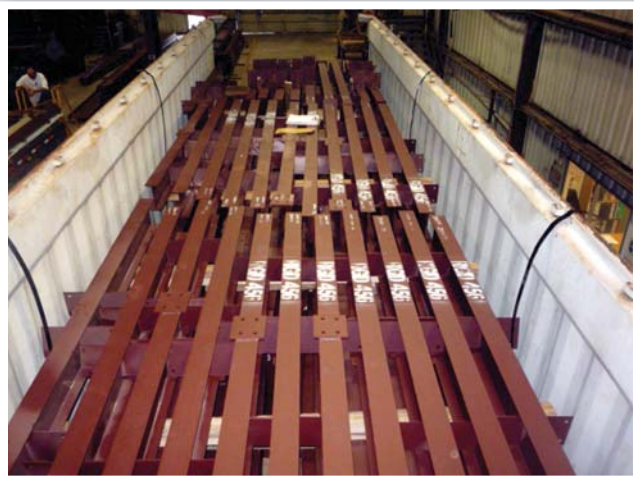
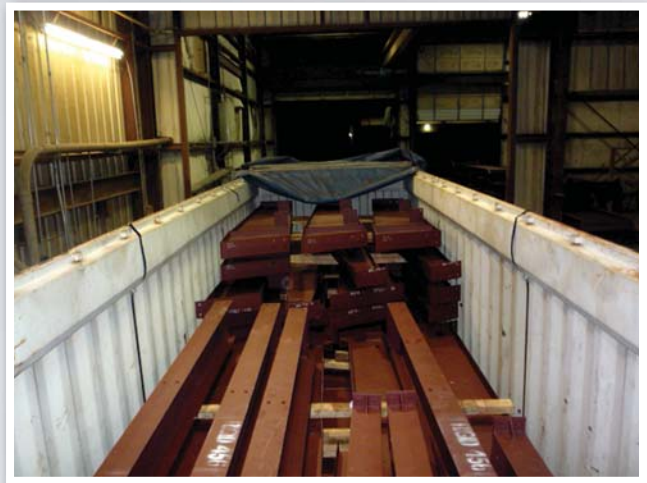
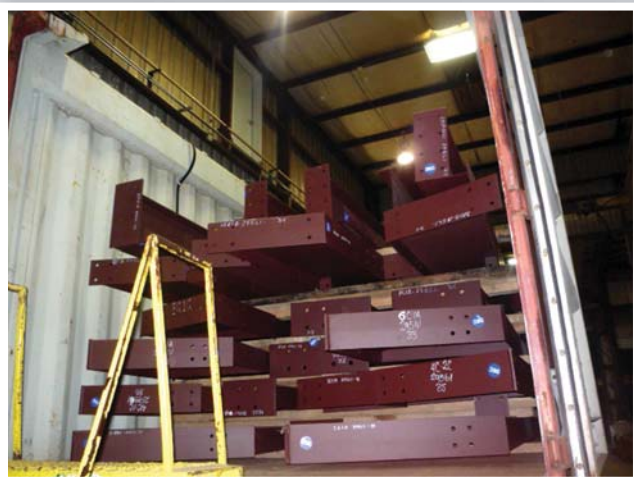


In addition to domestic transportation, Rigid also prepares jobs for international shipment by crate for waterway freight forwarding.

For international projects we will work with Export/Import bank of United States or Overseas Private Investment Corporation and try to find out if there is any funding available for the country that the project is going to be built.

Also, a team of our professionals will address the environmental, economic, physical and political ideas inherent in a complex development project.

Our office has the capability to work on any development project from residential, office, retail, industrial and hotel properties around the world.





Through Rigid Global Real Estate we have the ability to offer investment opportunities through Real Estate development. We can develop your land by in-house architects and civil engineers and site planners who will address the specific project design and conduct a market study to make sure the demand and economic requirements for your project are liable and the return on your investment is sound and solid.

For international projects we will work with Export/Import bank of United States or OPIC Bank and try to find out if there is any funding available for the country that the project is going to be built.

Also, a team of our professionals will address the environmental, economic, physical and political ideas inherent in a complex development project.

Our office has the capability to work on any development project from residential, office, retail, industrial and hotel properties around the world.





Building International Relationships



Rigid Global Buildings was invited to Afghanistan to discuss business capabilities in the efforts to rebuild Afghanistan. Alireza Ghodsi, Rigid's Chairman of the Board met with General David Petraeus, Commander of International Security Assistance Force and Commander of U.S. Forces in Afghanistan.

During the meetings, Alireza presented the capabilities of Rigid Global Buildings and how Rigid's products including steel buildings, structural steel, bridges and hi-rise construction could assist in the re-building of Afghanistan.



Meeting with General David Petraeus to discuss the rebuilding efforts of Afghanistan.



Televised interview with the Governor of Herat. Rigid Global announced they would be donating a metal building designed to be a medical facility at Herat University.



Left to Right: Honorable Bijan Kian, Director of Export & Import Bank of United States; Paul Brinkley, Deputy Secretary of Defense; Honorable M.Y. Nawandish, Mayor of Kabul; Ted Shayan, CEO of Concord International; Alireza Ghodsi, Chairman of the Board for Rigid Global Buildings.





Alireza Ghodsi was a part of an international group of businessmen invited to travel to Basra, Iraq for cooperation with the Basra Investment Commission. Haider Ali Fadel, the Chairman of Basra Investments Commission held a conference with the business men and the Federation of Industries and Chamber of Commerce in Basra to identify the investment environment and sign a memorandum of understanding. The conference was held in Saddam Hussein's Old Palace next to Shat-Al-Arab Waterway.





Basra Investment Commission held a conference with a coalition of US companies, GKC and Businessmen Union, Federation of Industries and Chamber of Commerce in Basra to identify the investment environment and sign a memorandum of understanding that will facilitate the establishment of a world-class modern city called Barakat Park.

The President of the Coalition, Fred Afshar told the newspaper Basra Electronic, "Preliminary design of the city's industrial trade in Basra would import services and manufactured products from America, in addition providing various types of services to assist in the training and rehabilitation of local employment for the purpose of development planned in the province".



The beginning of 2011 saw the fulfillment of one of Rigid's international goals with the opening of Rigid's Nigeria office in Lagos. The goal of the office is to provide low income housing and a variety of commercial and industrial projects throughout Africa.

Representative of that commitment was evident when several of Rigid Global's Board of Directors and Rigid Nigeria attended the ground breaking ceremony for the Nigerian-American Multicultural Center (NAMC) in Houston, TX. Professor Ibidapo Adebawale Adefuye did the honors at the ceremony and commended the efforts of the members of the NAMC for kick-starting developmental projects in the area. Further, the Nigerian Envoy applauded Rigid Nigeria for their investment in Nigeria and assisting them in making a better life for not only Nigerian citizens, but citizens of Africa.



Examples of projects in Nigeria developed by Architect Jikiemi in collaboration with Rigid Nigeria CEO Niyi Ero-Phillips

All of Rigid's websites contain detailed information regarding the particular service or product offered. Please visit us online at one of the following sites:

- www.RigidBuilding.com
- www.RigidGlobalBuildings.com
- www.RigidGlobalComponents.com
- www.RigidGlobalRealEstate.com

Thank you for your interest in Rigid Global Industries. Whether you are interested in Pre-Engineered Metal Buildings, Metal Building Components, Structural Steel, Blast Resistant Buildings, Bridges or Real Estate opportunities - Rigid is here to help. Bring us your next project and let Rigid show you the professional and detailed manner in which we conduct business - the Rigid Way - the Right Way!

Give us a call at 888-GO-RIGID (888-467-4443) and get started today!



Innovation - New Technology - Better Products - Global Reach

Global Headquarters - Houston, TEXAS USA
18933 Aldine Westfield - Houston, TX 77073
p. 281.443.9065 - f. 281.443.9064 - t. 888.467.4443

Global Offices Located in:
United States of America • China • Iraq • Nigeria



www.RigidGlobalIndustries.com