



Manufactured By



9" and 12" Throat
Continuous Ridge Ventilators



TDI APPROVED

ALSO AVAILABLE



Metallic Products' continuous ridge ventilators are also available in Florida Product Approved specifications.

CONTINUOUS RIDGE VENTILATOR

A properly engineered ventilation system using continuous ridge ventilators controls the movement of fresh air through the building removing hot, stale air and air contaminated by manufacturing or production processes. Summer heat is released naturally through gravity ridge ventilators. During winter proper ventilation can assist in the control of condensation and other moisture problems, such as rust and deterioration of insulation or the damage to stored products.

Vents may be furnished with or without dampers to control the flow of air. Pull chains are the standard operators for dampers. Multiple damper operators are available for two or more units.

Standard ridge ventilators are shipped with a 1:12 end cap and can be field modified to accommodate up to a 6:12 roof pitch. Ventilators can be custom ordered to accommodate roof pitches greater than 6:12.

SPECIFICATIONS

STANDARD SIZE

9" throat and 12" throat available in 10' sections. Low profile design can be used for single unit or continuous run installation with no disassembly.

Additional sizes: 4", 15", 18", 24", 30", 36", 42" and 48"

For custom lengths or throat sizes, please contact your sales representative.

INTEGRAL DAMPERS

Easy-moving damper opens to any degree from fully open to completely closed. Lockerpull operator is standard and comes with 10' sash chain and chain keeper. Check out our ridge vent operator selections for hand pull, lever, boatwinch and operation extension options.

DESIGN

Aerodynamically proportioned to exclude weather. Protects air passages and full outlet area.

BIRD SCREEN

Vents are fully protected by bird screen mesh galvanized hardware cloth.

CONSTRUCTION

Durable 26-gauge exterior combined with internal components of 24-, 20- and 18-gauge die formed sheet metal and machined parts for long service life.

FINISH

Galvalume or Polar White finish is standard, and other colors are available, including Kynar.[®]

DRAINAGE AREA

Continuous slot drainage placed at the bottom of both sides of windbands.

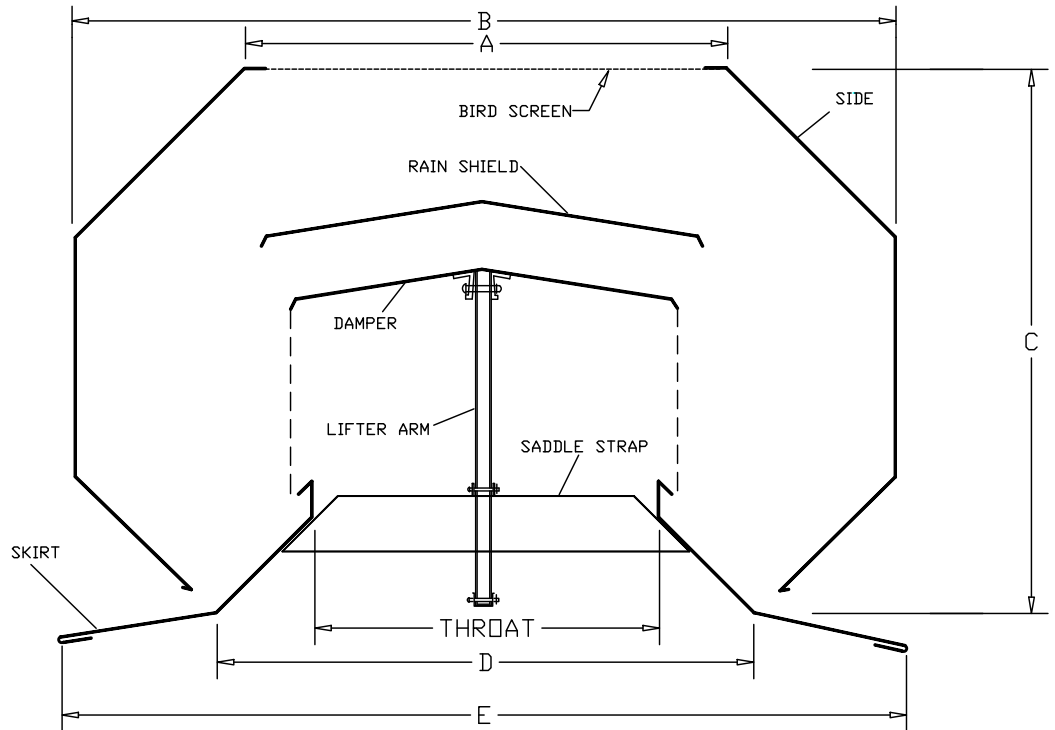
NOTE

Please specify flat or die formed skirts, roof pitch, damper operator and color when ordering.





Manufactured By



DIMENSIONS

THROAT*	A	B	C	D	E
4"	6-1/4"	12-1/2"	9"	10"	18"
9"	13"	21-1/4"	14-1/2"	16"	28-1/4"
12"	17"	28-1/2"	18"	20-3/4"	33"

*Other throat sizes available upon request.

Roof panels must extend to "D" dimension for proper support and drainage.

SHIPPING WEIGHT

THROAT	STANDARD CRATED	PACKAGE SIZE (L x W x H)
4"	190 lbs.**	125" x 20" x 14"
9"	230 lbs.**	125" x 30-1/2" x 20"
12"	250 lbs.**	125" x 34-3/4" x 24"

** Approximate weight.

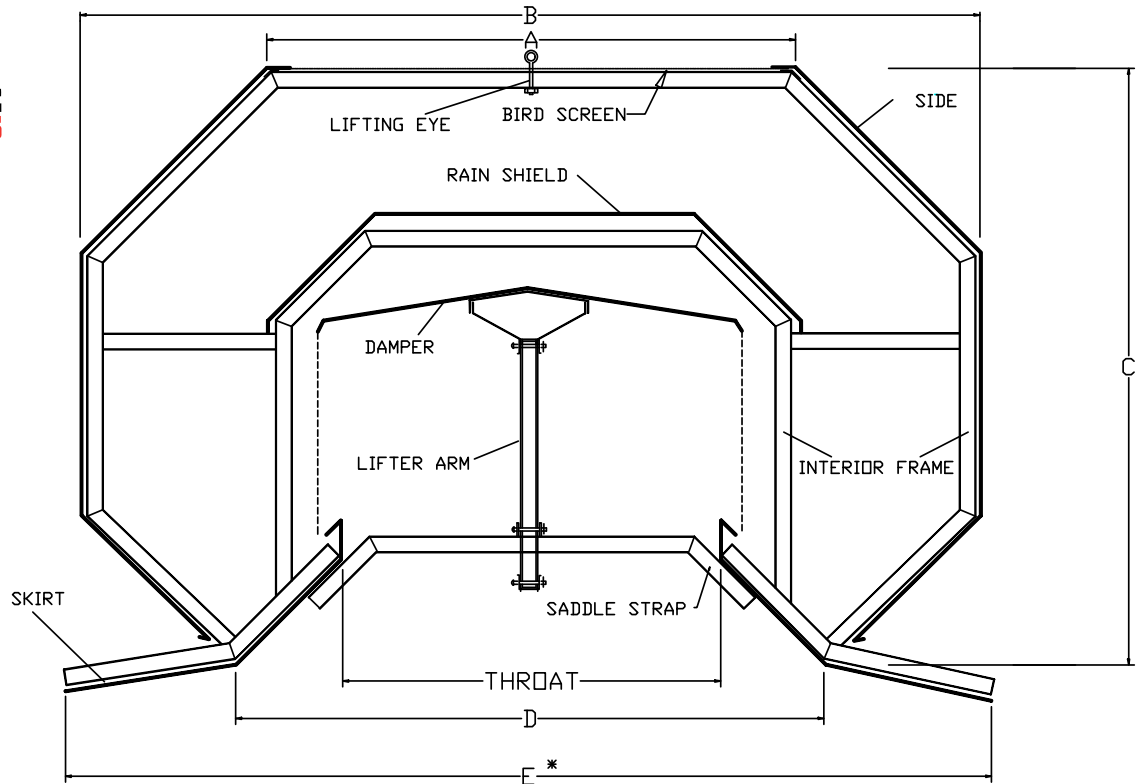




15" TO 48" THROAT WELDED FRAME RIDGE VENTILATORS

NOTE: Interior frame made of 1/8" x 1-1/2" x 1-1/2" angle pre-galvanized. All other parts made of 24 gauge sheet metal, galvalume, polar white or painted color.

Manufactured By



THROAT	A	B	C	D	E*	WEIGHT (Not Crated)	DESIGN PRESSURE
15"	22-5/8"	38-31/32"	26-1/2"	25-1/8"	41-3/16"	275 lbs.	-97.1 psf
18"	25-7/16"	44"	30-5/16"	29-1/8"	47-3/16"	300 lbs.	-88.2 psf
24"	33-1/4"	57"	38-3/16"	37-3/8"	59-3/8"	400 lbs.	-70.4 psf
30"	38-9/16"	67-1/2"	45-3/8"	46-5/8"	69-5/8"	450 lbs.	-52.5 psf
36"	47-9/16"	81-1/4"	53-13/16"	55-1/2"	83-3/4"	500 lbs.	-34.7 psf
42" **	56"	94-1/8"	61-1/8"	62-1/8"	95-1/2"	575 lbs.	N/A
48" **	67-3/8"	106-1/8"	65-7/8"	67-5/8"	107-7/8"	650 lbs.	N/A

Dimensions are of vent frames only and do NOT include thickness of sheet metal.

* Listed dimensions are based on a 1:12 roof pitch.

** Must ship unassembled (knockdown.)

Roof panels must extend to "D" dimension for proper support and drainage.





TABLE OF CAPACITIES FOR CONTINUOUS VENTILATORS

CAPACITY:

To determine capacity per unit, multiply "Base Rating" by "Temperature-Height Factor": $CFM = \text{Base} \times \text{Temperature-Height Factor}$

Based on fresh air intake area 1-1/2 times ventilator throat area. Assumes 5 mph wind speed.

Manufactured By



BASE RATINGS	
THROAT SIZE	C.F.M.
4"	1200
9"	2700
12"	3600
15"	4500
18"	5400
24"	7200
30"	9000
36"	10800
42"	12600
48"	14400

TEMPERATURE-HEIGHT FACTORS									
HEIGHT	TEMPERATURE DIFFERENCE								
	5°	10°	15°	20°	25°	30°	35°	40°	45°
10'	.37	.49	.58	.64	.70	.76	.81	.86	.95
15'	.42	.60	.71	.80	.86	.92	.99	1.05	1.09
20'	.53	.70	.81	.92	.99	1.07	1.14	1.22	1.26
25'	.58	.77	.89	1.00	1.08	1.18	1.25	1.33	1.36
30'	.63	.83	.97	1.08	1.17	1.28	1.36	1.45	1.50
35'	.66	.87	1.02	1.14	1.24	1.35	1.44	1.51	1.58
40'	.70	.93	1.08	1.22	1.30	1.41	1.50	1.61	1.68
45'	.74	.96	1.12	1.28	1.38	1.48	1.59	1.68	1.75
50'	.77	1.01	1.18	1.33	1.44	1.56	1.67	1.75	1.83
55'	.80	1.06	1.23	1.39	1.50	1.64	1.72	1.83	1.92
60'	.83	1.09	1.28	1.44	1.55	1.69	1.79	1.90	2.00
65'	.85	1.12	1.32	1.48	1.61	1.74	1.85	1.97	2.06
70'	.88	1.17	1.36	1.53	1.67	1.79	1.89	2.02	2.11
75'	.90	1.19	1.39	1.57	1.69	1.83	1.96	2.06	2.17
80'	.93	1.22	1.42	1.61	1.72	1.86	2.00	2.11	2.20

Height = Vertical rise from inlets near floor to ventilator

Temperature = Estimated temperature difference between middle of air intake near the floor and ventilator with dampers open





CONTINUOUS RIDGE VENTILATOR OPERATORS

Manufactured By



OPERATOR A – HAND PULL

- 40' Cable
- (2) Cable Clamps
- (1) Chain Catch
- (2) Pulleys with Eyebolts

OPERATOR C – LEVER

(Operates up to 6–9" vents or 4–12" vents)

- 40' Cable
- (2) Pulleys with Eyebolts
- (2) Cable Clamps
- (1) Eyebolt (not welded) with Nuts
- (1) Lever Handle with Mounting Hardware
- (1) Installation Instructions

OPERATOR D – BOATWINCH

(Operates up to 8–9" vents, 6–12" vents, 4–24" vents or 3–36" vents)

- 60' Cable
- (2) Pulleys with Eyebolts
- (1) Boatwinch
- (1) Cable Catch
- (2) Eyebolts (not welded) with Nuts
- (2) Cable Clamps
- (1) Mounting Hardware
- (1) Installation Instructions

OPERATION EXTENSION

- 50' Cable
- (2) Cable Clamps
- (2) Eyebolts (not welded) with Nuts

DUFF NORTON OPERATOR

(Operates up to 10–9" vents or 7–12" vents)

Duff Norton Motor

