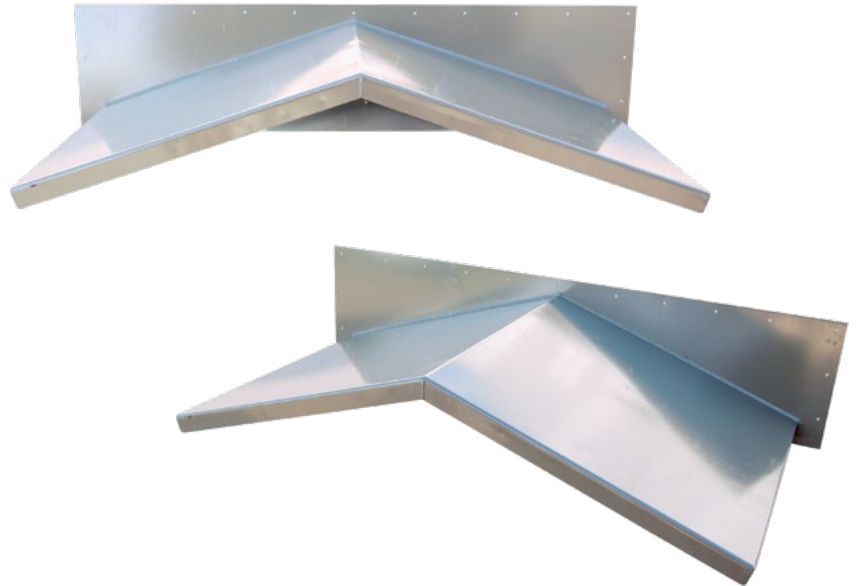




Manufactured By



## ICE SHIELD CANOPY

Outwit Mother Nature with a Metallic Products ice shield canopy. These gable canopies are engineered specifically for heavy snow and ice areas and provide protection from dangerous eave ice shear.

### SPECIFICATIONS

#### DESIGN SPECIFICATIONS

IBC 2012 & 2015

ASCE 7-10 allowable stress design

\*IBC 2018 ASCE 7-16 allowable stress design

5'-6" x 3'-0"	121 psf snow/live load
	135 psf wind uplift
5'-6" x 4'-0"	64 psf snow/live load
	67 psf wind uplift
7'-6" x 3'-0"*	72 psf snow/live load
	106 psf wind uplift
7'-6" x 4'-0"	45 psf snow/live load
	49 psf wind uplift

#### CONSTRUCTION

Fabricated 10-gauge structural plate. All welded construction.

#### SIZE

Available in single or double door sizes. Nominal 5'-6" x 3'-0", 5'-6" x 4'-0", 7'-6" x 3'-0" and 7'-6" x 4'-0". Refer to *Technical Specifications* for actual dimensions.

#### FINISH

- G-90 galvanized
- Powder coated standard metal building colors
- Custom color matching

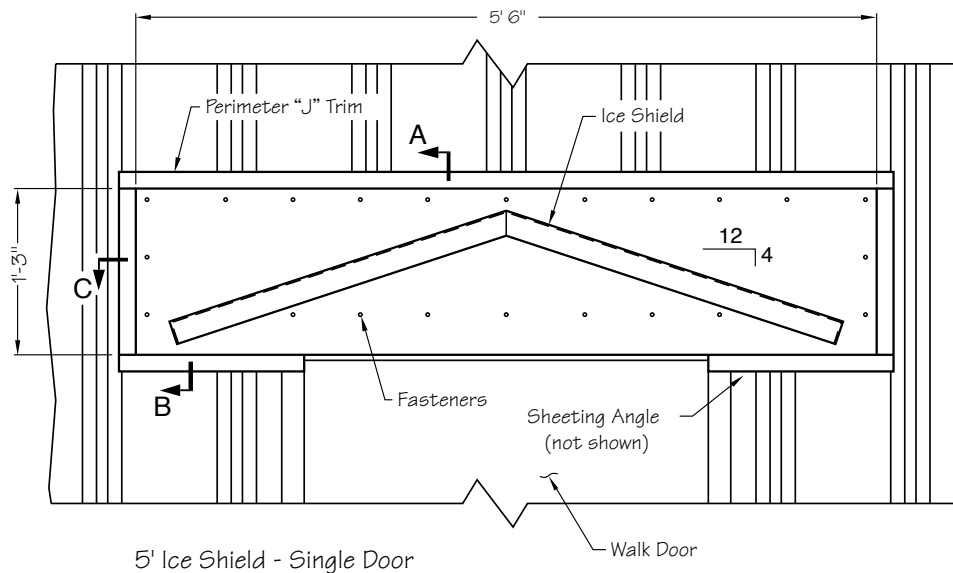




Manufactured By



## TECHNICAL SPECIFICATIONS



### ICE SHIELD CANOPY KIT COMPONENTS:

- Ice Shield Canopy (10-ga.)
- Perimeter "J" Trim (26-ga.)
- Sheeting Angle (16-ga.)
- Fasteners (#12 x 1 SDS)
- Sealant Caulk (Clear)

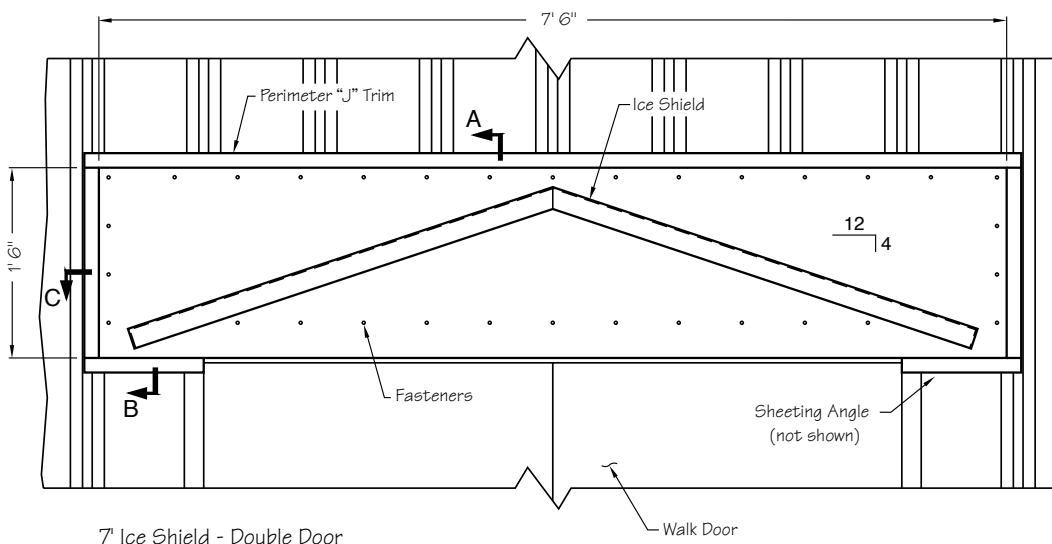
Quantities and lengths of components vary based on size required.

### SPECIAL CONSIDERATIONS:

Ice shield canopy wall plates are pre-punched for fastening to 16-gauge wall framing at predetermined locations. If the hole edge distance on standard ice shield canopies requires modification to accommodate special framing, please specify when ordering.

These gable canopies are provided with stiffener channels welded to the back side of the wall plate. To accommodate block wall installations, additional mounting holes replace stiffener channels for flat surface mounting. Please note this condition when ordering.

Fasteners for block wall mounting are not provided by Metallic Products.

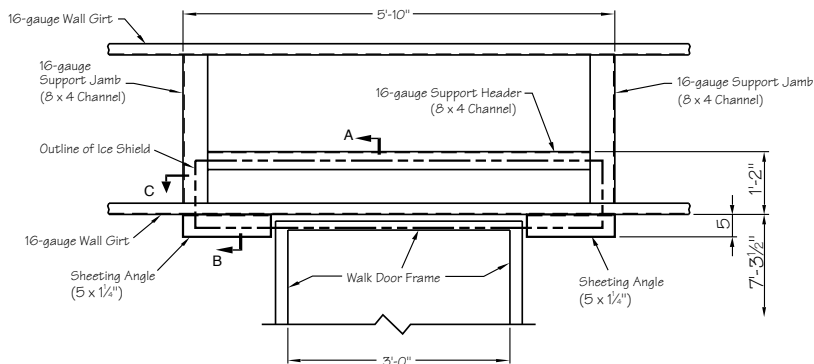




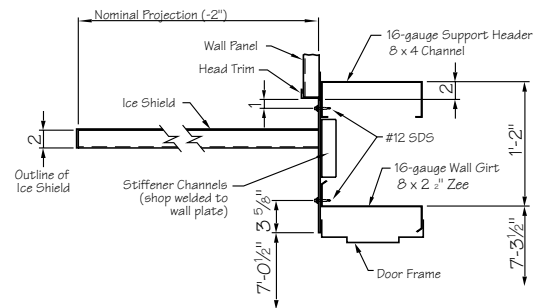
Manufactured By



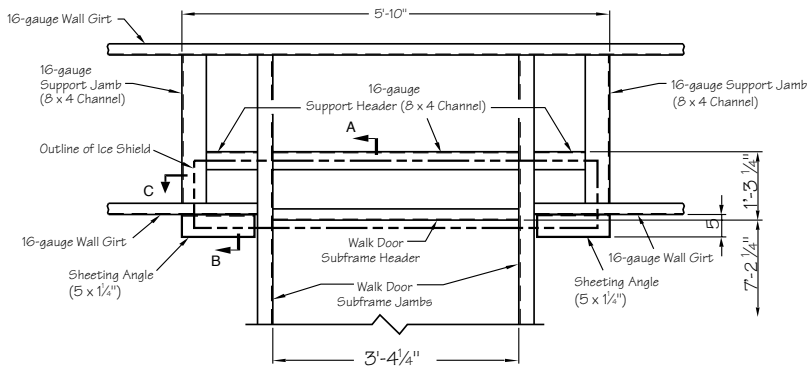
## TECHNICAL SPECIFICATIONS — SINGLE DOOR



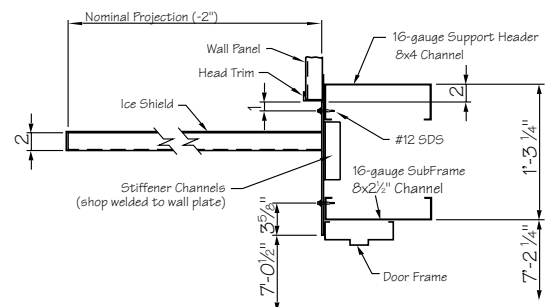
Typical Ice Shield Wall Framing (Single Door)



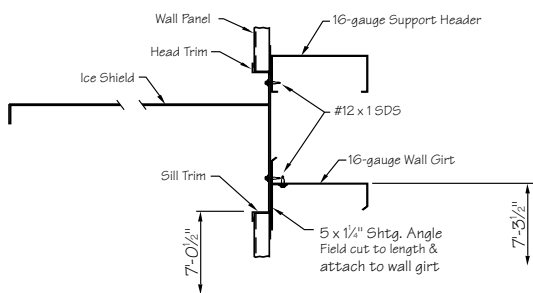
Section - A  
Single Door w/o Subframe



Typical Ice Shield Wall Framing (Single Door w/Subframe)



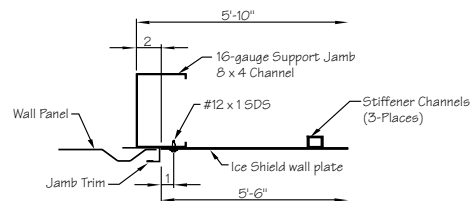
Section - A  
Single Door w/o Subframe



Section - B

### FRAMING NOTE:

Framing shown is based on industry standards for typical walk door framing on metal buildings. Actual door and wall conditions may vary.



Section - C  
Single Door

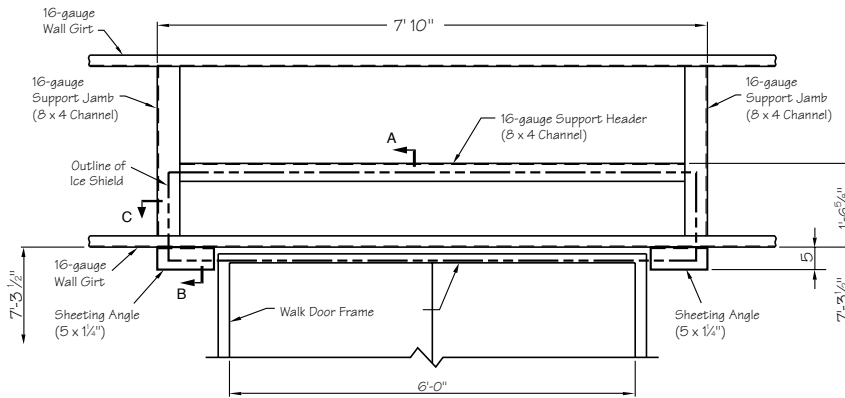




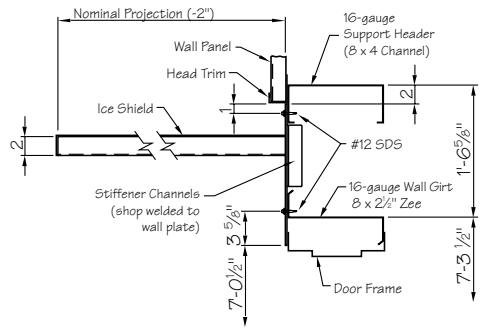
Manufactured By



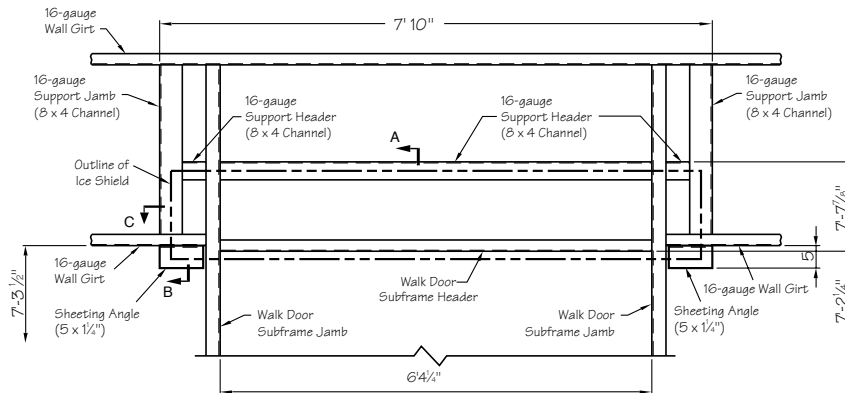
## TECHNICAL SPECIFICATIONS — DOUBLE DOOR



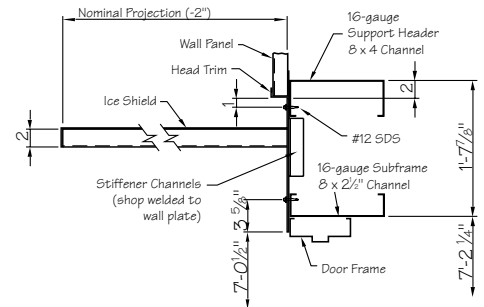
Typical Ice Shield Wall Framing (Double Door)



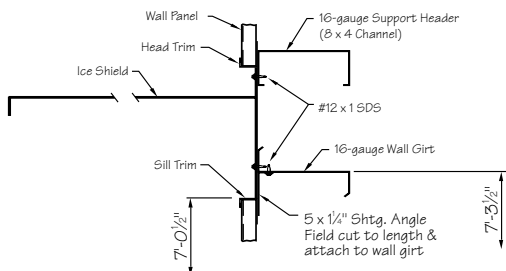
Section - A  
Double Door w/o Subframe



Typical Ice Shield Wall Framing (Double Door w/Subframe)



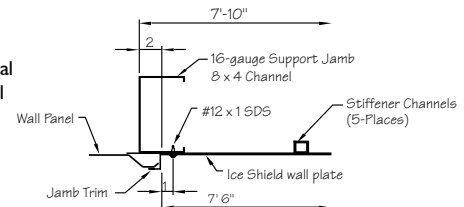
Section - A  
Double Door w/Subframe



Section - B

**FRAMING NOTE:**

Framing shown is based on industry standards for typical walk door framing on metal buildings. Actual door and wall conditions may vary.



Section - C  
Double Door





# GALVANIZED STEEL ADJUSTABLE BACK PIVOT LOUVER

Manufactured By



## STANDARD FEATURES

- 18-gauge galvanized steel frame, 4 1/2" nominal depth
- 20-gauge galvanized steel blade
- Hand crank operator
- Mill finish
- Aluminum screen cloth installed in an extruded removable, rewireable aluminum frame
- Architecturally styled, all galvanized steel construction and blade seals

## OPTIONS

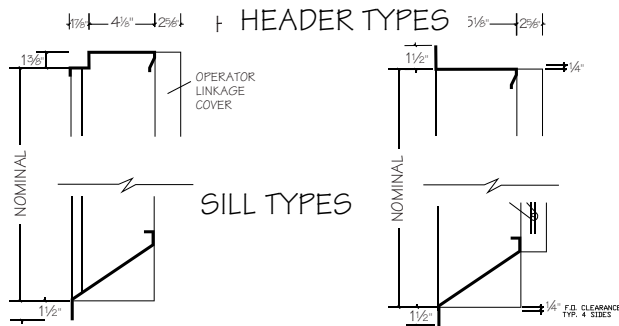
Changes to the base design of this louver are available at an additional cost, including:

- Extended sill
- A variety of bird or insect screens
- Powder coated finish
- Pull chain operators
- Motor
- Mullions, if needed (not for A Panel or R Panel types)

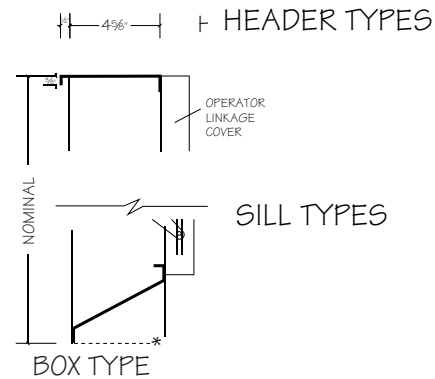
### NOTE

Minimum size is 24"x24"

### BACK PIVOT / CENTER PIVOT



### BACK PIVOT BOX TYPE ONLY

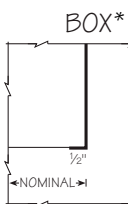
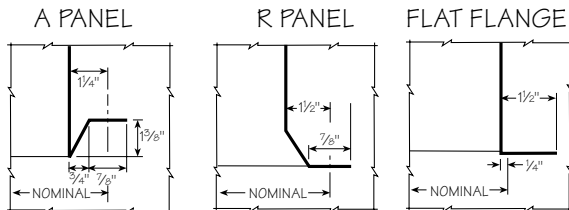


SELF-FLASHING

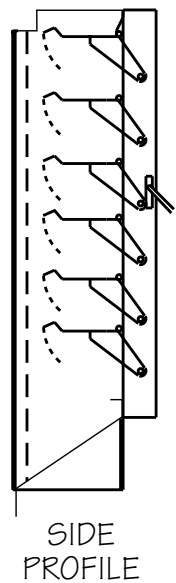
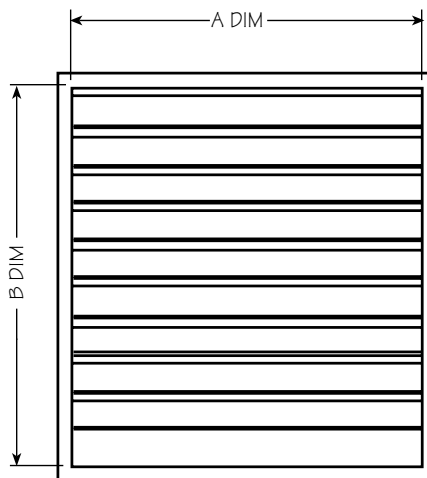
FLAT FLANGE

BOX TYPE

### JAMB TYPES



\* Includes Interior Mounting Angles & Exterior Mullions When Specified  
Exterior Flashing by Others





# GALVANIZED STEEL ADJUSTABLE CENTER PIVOT LOUVER

Manufactured By



**NOTE**  
Minimum size is 24"x24"

## STANDARD FEATURES

- 18-gauge galvanized steel frame, 4 1/2" nominal depth
- 20-gauge galvanized steel blade
- Hand crank operator
- Mill finish
- Aluminum screen cloth installed in an extruded removable, rewireable aluminum frame
- Blade and jamb seals

## OPTIONS

Changes to the base design of this louver are available at an additional cost, including:

- Extended sill
- A variety of bird or insect screens
- Selection of finishes: Baked enamel, polyurethane or color match
- Pull chain operators
- Motor
- Mullions, if needed (not for A Panel or R Panel types)

BACK PIVOT / CENTER PIVOT

CENTER PIVOT CHANNEL FRAME/BOX TYPE

